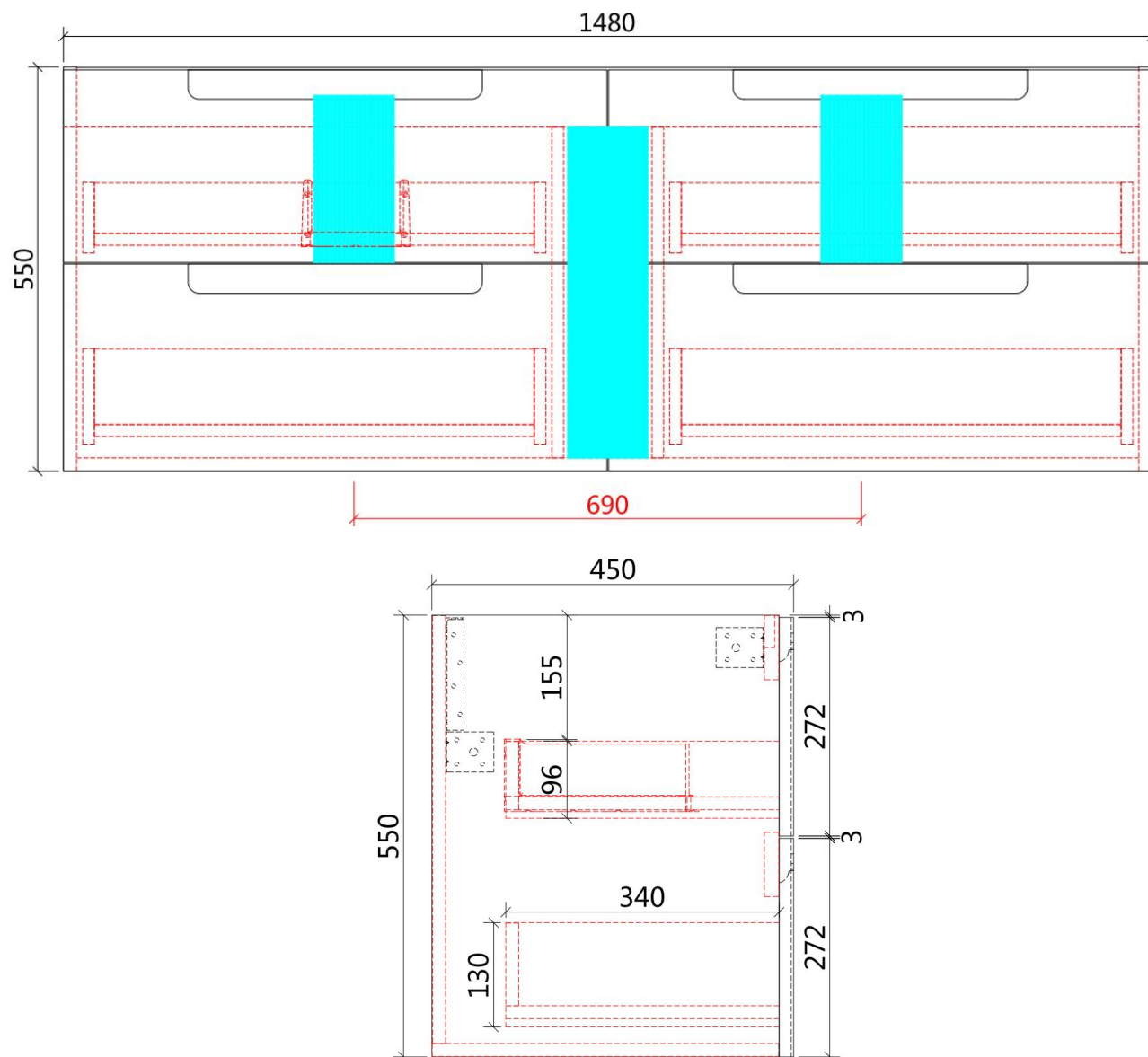


## NEVA WALL HUNG

Code: CAWH49-1500



### Features:

- All-drawers model
- Premium-grade, durable timber plywood
- Contemporary Strata in matte white polyurethane finish
- Hettich Quadro S full extension, soft close drawer runners
- Minimalist L-rail design finger pull drawers
- Drawer Organiser included
- Premium graphite interior

