

# OPAL



Nero



## About Nero Tapware



At Nero Tapware, we're dedicated to creating stylish and high-quality bathroom wares that stand the test of time. Our commitment to excellence is reflected in every aspect of our business, from our stringent quality control measures to our innovative designs.

**Quality** is at the heart of everything we do. We use only the finest materials and the latest manufacturing techniques to ensure that every product we create is of the highest quality.

**Innovation** is key to our success. We're constantly pushing the boundaries of what's possible in bathroom design, creating products that are not only visually stunning but also practical and user-friendly. And provide up to 9 different stunning colours for choice.

**Sustainability** is a core value of our brand. We're committed to reducing our environmental impact and creating products that are eco-friendly and sustainable. We're always looking for ways to make a positive difference.

**Service** is our top priority. Our professional and friendly customer service team committed to providing you with the best possible experience.

At Nero Tapware, we believe that a beautiful bathroom is essential to a happy and healthy life. That's why we're passionate about creating products that not only look great but also stand up to the rigours of everyday use. We invite you to explore our range and discover the perfect products for your bathroom today.



---

The Opal Range by Nero is based on this design concept  
Opal's multi-faceted texture design has diamond prisms with multiple angles.

---

The multiple facets, create light reflections,  
that will add endless visual experience to your space,  
Every face is beautiful and every detail is meticulously crafted.

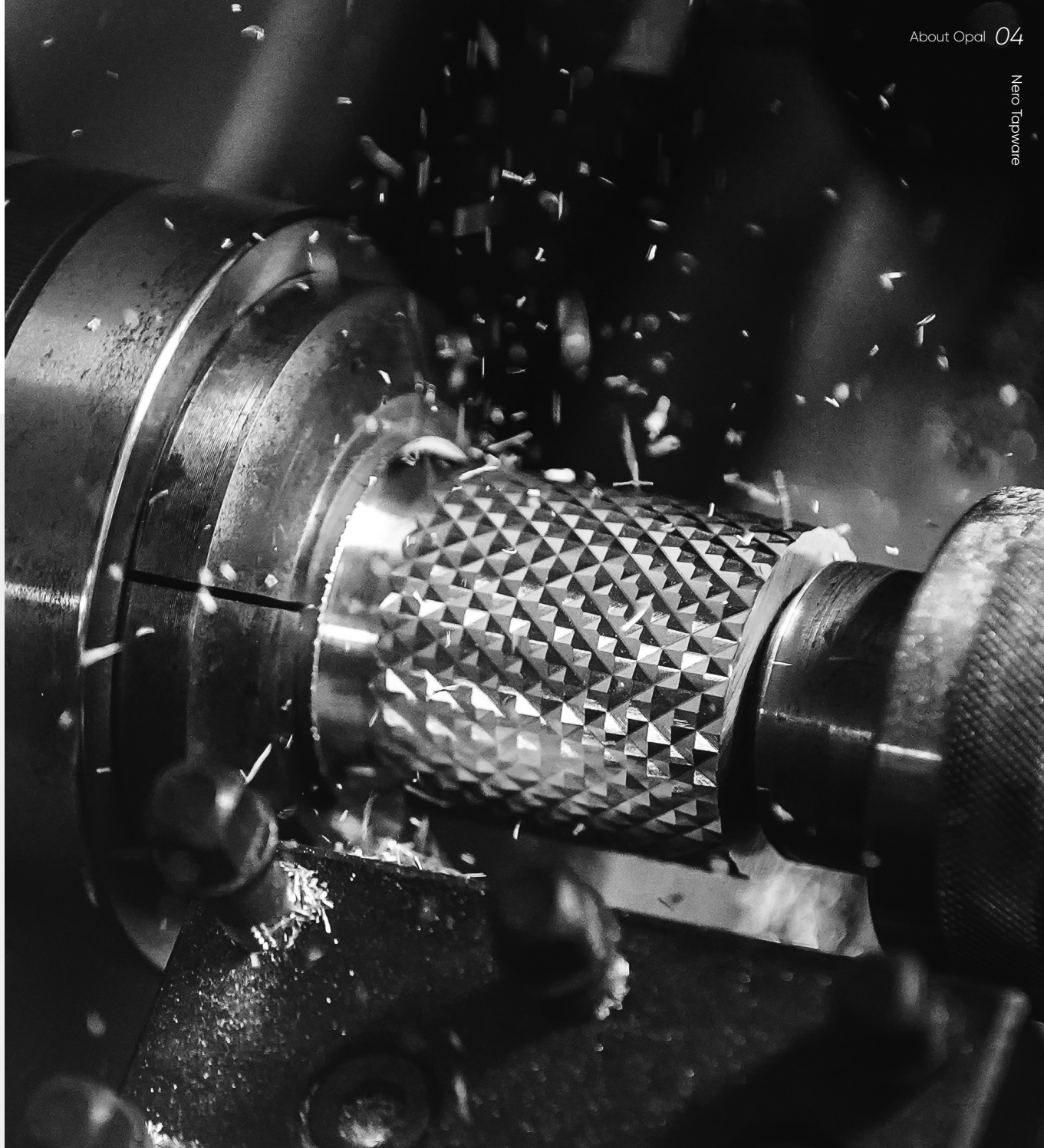


# Innovative Technology of The Opal Range

---

The brand new OPAL series by NERO is based on this design concept  
Opal's multi-faceted texture design has diamond prisms with multiple angles.

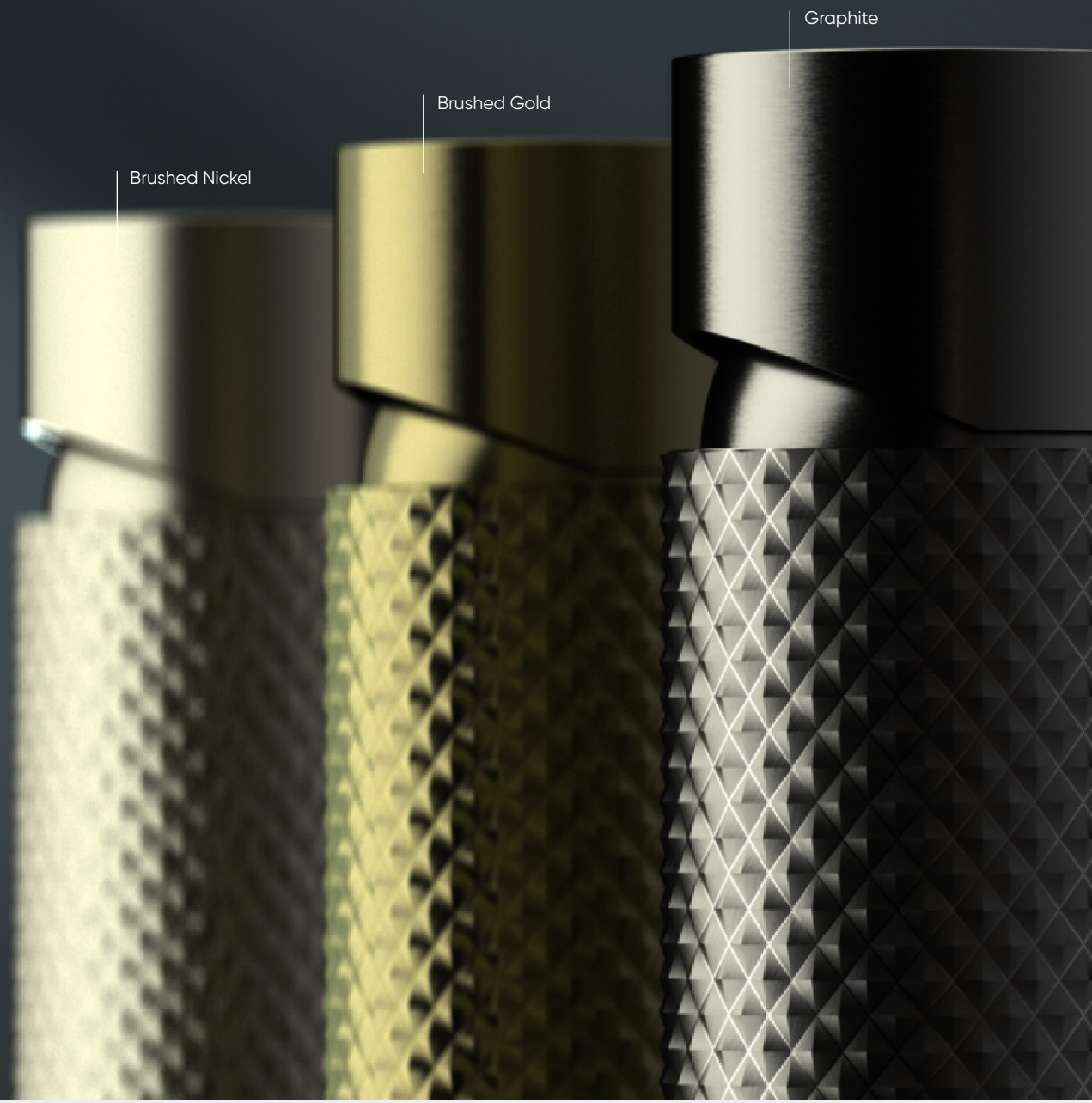




## Innovative Carving Technology

---

Making Your Bathroom Ultra Stylish. Innovative cutting technology makes every piece shimmer as it catches the light. The result is sophisticated and dazzling.



Brushed Nickel

Brushed Gold

Graphite

Brushed Bronze



## Colorful Unpredictable

---


4 colour options.

Perfect meets the style requirements of today's bathrooms.


Resulting in pure artistry.

# MIXER TAPS

---

 Brushed Nickel

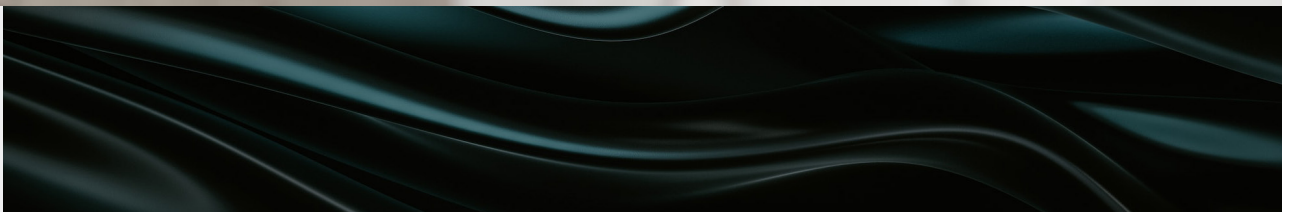
 Brushed Bronze

 Brushed Gold

 Graphite

---

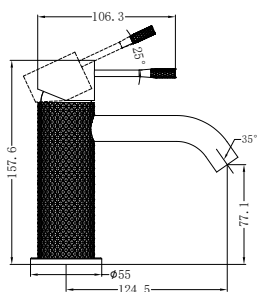
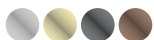






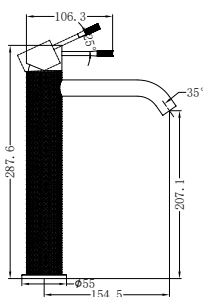
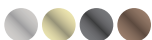
NR251901BN

Opal Basin Mixer Brushed Nickel  
Wels Rating: 5 Star, 5L/Min  
Wels REG No. T43217



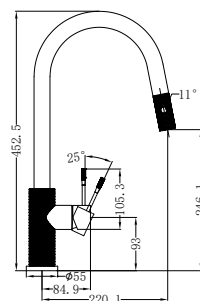
NR251901aBN

Opal Tall Basin Mixer Brushed Nickel  
Wels Rating: 6 Star, 4.5L/Min  
Wels REG No. T43214



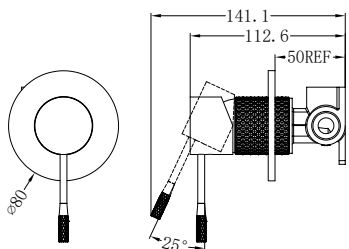
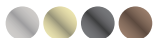
NR251908BN

Opal Pull Out Sink Mixer With Vegie Spray Function Brushed Nickel  
Wels Rating: 6 Star, 4.5L/Min  
Wels REG No. T41349



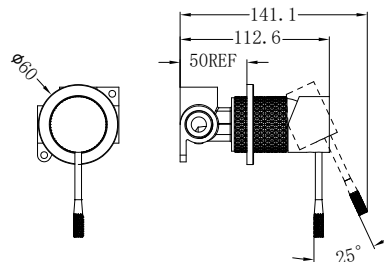
NR251909BN

Opal Shower Mixer With 80mm Plate  
Brushed Nickel  
Wels Rating: N/A



NR251909hBN

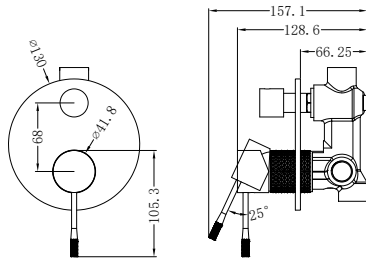
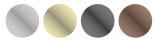
Opal Shower Mixer With 60mm Plate  
Brushed Nickel  
Wels Rating: N/A





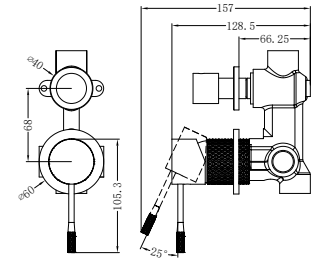
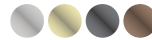
**NR251909aBN**

Opal Shower Mixer With Divertor  
Brushed Nickel  
Wels Rating: N/A



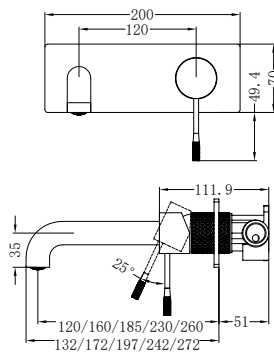
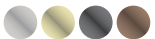
**NR251909eBN**

Opal Shower Mixer With Divertor Separate Plate  
Brushed Nickel  
Wels Rating: N/A



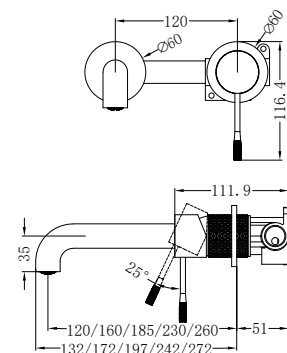
**NR251907a120BN/ NR251907a160BN**  
**NR251907aBN/ NR251907a230BN/ NR251907a260BN**

Opal Wall Basin/Bath Mixer 120/160/185/230/260mm  
Brushed Nickel  
Wels Rating: 5 Star, 6L/Min  
Wels REG No. T43325/T43326/T43324/T43327/T43328



**NR251907b120BN/ NR251907b160BN**  
**NR251907bBN/ NR251907b230BN/ NR251907b260BN**

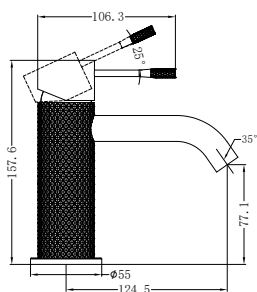
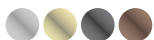
Opal Wall Basin/Bath Mixer Separate Back Plate  
120/160/185/230/260mm Brushed Nickel  
Wels Rating: 5 Star, 6L/Min  
Wels REG No. T43330/T43331/T43329/T43332/T43333





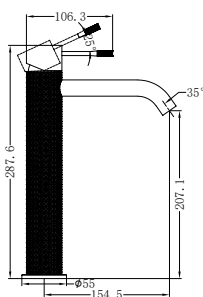
NR251901BG

Opal Basin Mixer Brushed Gold  
Wels Rating: 5 Star, 5L/Min  
Wels REG No. T43217



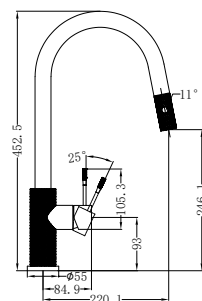
NR251901aBG

Opal Tall Basin Mixer Brushed Gold  
Wels Rating: 6 Star, 4.5L/Min  
Wels REG No. T43214



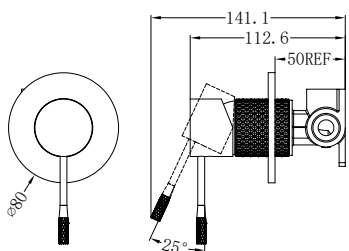
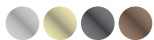
NR251908BG

Opal Pull Out Sink Mixer With  
Vegie Spray Function Brushed Gold  
Wels Rating: 6 Star, 4.5L/Min  
Wels REG No. T41349



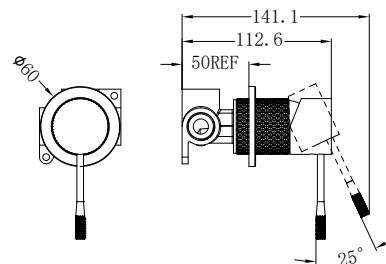
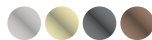
NR251909BG

Opal Shower Mixer With 80mm Plate  
Brushed Gold  
Wels Rating: N/A



NR251909hBG

Opal Shower Mixer With 60mm Plate  
Brushed Gold  
Wels Rating: N/A

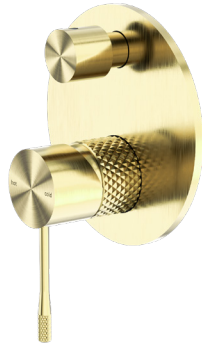




Mixer Taps

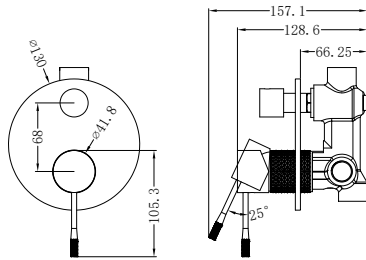
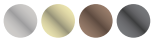


Mixer Taps



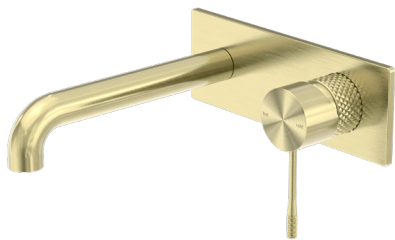
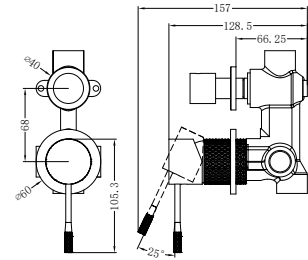
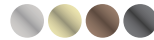
**NR251909aBG**

Opal Shower Mixer With Divertor  
Brushed Gold  
Wels Rating: N/A



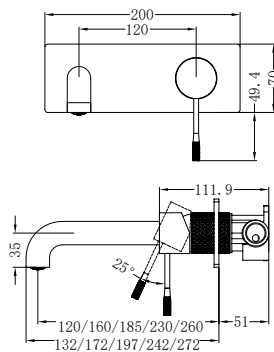
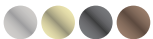
**NR251909eBG**

Opal Shower Mixer With Divertor Separate Plate  
Brushed Gold  
Wels Rating: N/A



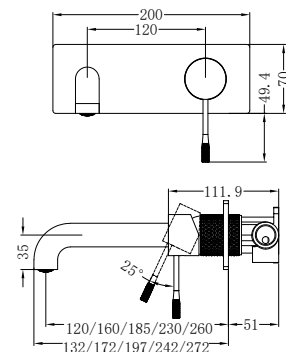
**NR251907a120BG/NR251907a160BG**  
**NR251907aBG/NR251907a230BG/NR251907a260BG**

Opal Wall Basin/Bath Mixer 120/160/185/230/260mm  
Brushed Gold  
Wels Rating: 5 Star, 6L/Min  
Wels REG No. T43325/T43326/T43324/T43327/T43328



**NR251907b120BG/NR251907b160BG**  
**NR251907bBG/NR251907b230BG/NR251907b260BG**

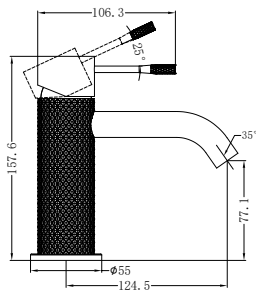
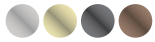
Opal Wall Basin/Bath Mixer Separate Back Plate  
120/160/185/230/260mm Brushed Gold  
Wels Rating: 5 Star, 6L/Min  
Wels REG No. T43330/T43331/T43329/T43332/T43333





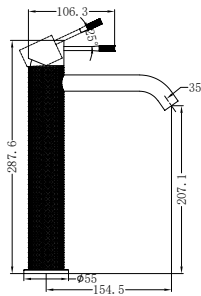
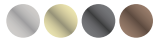
**NR251901BZ**

Opal Basin Mixer Brushed Bronze  
Wels Rating: 5 Star, 5L/Min  
Wels REG No. T43217



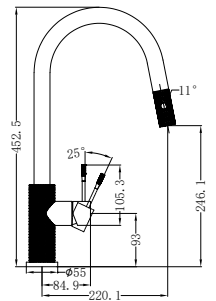
**NR251901aBZ**

Opal Tall Basin Mixer Brushed Bronze  
Wels Rating: 6 Star, 4.5L/Min  
Wels REG No. T43214



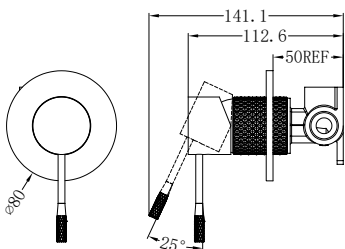
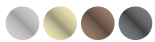
**NR251908BZ**

Opal Pull Out Sink Mixer With Vegie Spray Function Brushed Bronze  
Wels Rating: 6 Star, 4.5L/Min  
Wels REG No. T41349



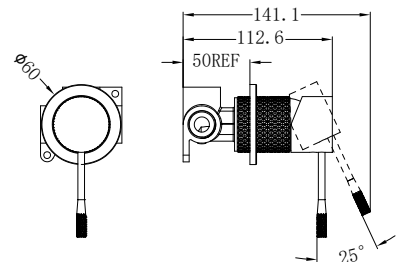
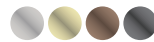
**NR251909BZ**

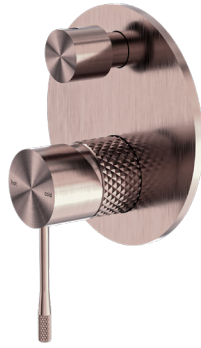
Opal Shower Mixer With 80mm Plate  
Brushed Bronze  
Wels Rating: N/A



**NR251909hBZ**

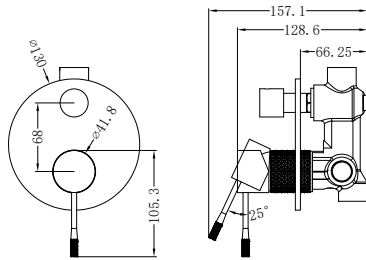
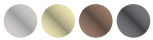
Opal Shower Mixer With 60mm Plate  
Brushed Bronze  
Wels Rating: N/A





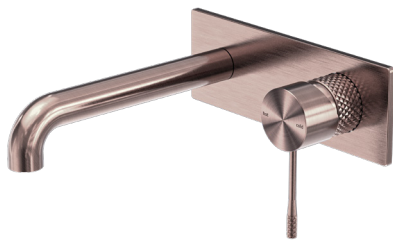
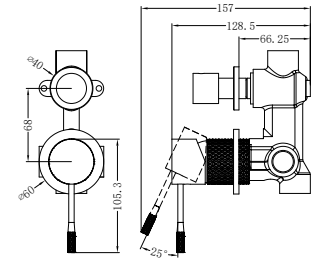
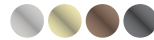
**NR251909aBZ**

Opal Shower Mixer With Divertor  
Brushed Bronze  
Wels Rating: N/A



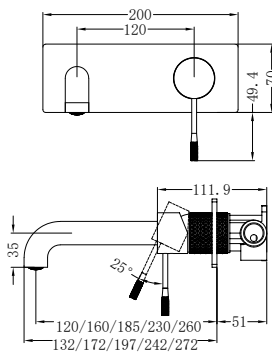
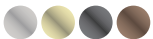
**NR251909eBZ**

Opal Shower Mixer With Divertor Separate Plate  
Brushed Bronze  
Wels Rating: N/A



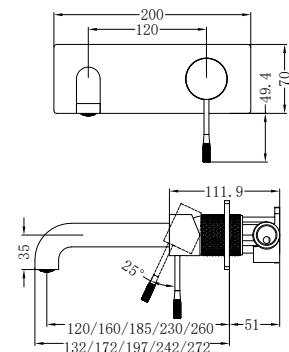
**NR251907a120BZ/NR251907a160BZ  
NR251907aBZ/NR251907a230BZ/NR251907a260BZ**

Opal Wall Basin/Bath Mixer 120/160/185/230/260mm  
Brushed Bronze  
Wels Rating: 5 Star, 6L/Min  
Wels REG No. T43325/T43326/T43324/T43327/T43328



**NR251907b120BZ/NR251907b160BZ  
NR251907bBZ/NR251907b230BZ/NR251907b260BZ**

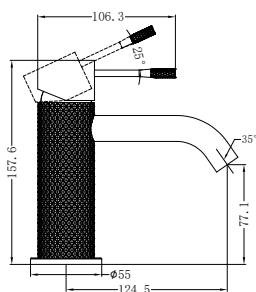
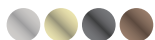
Opal Wall Basin/Bath Mixer 120/160/185/230/260mm  
Separate Back Plate Brushed Bronze  
Wels Rating: 5 Star, 6L/Min  
Wels REG No. T43330/T43331/T43329/T43332/T43333





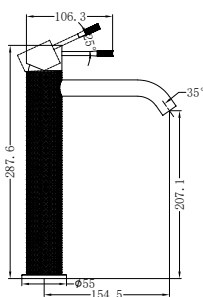
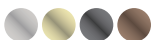
NR251901GR

Opal Basin Mixer Graphite  
Wels Rating: 5 Star, 5L/Min  
Wels REG No. T43217



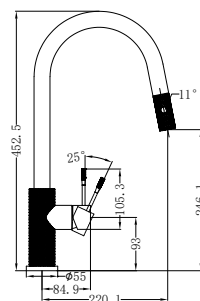
NR251901aGR

Opal Tall Basin Mixer Graphite  
Wels Rating: 6 Star, 4.5L/Min  
Wels REG No. T43214



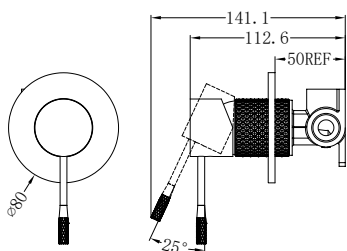
NR251908GR

Opal Pull Out Sink Mixer With  
Vegie Spray Function Graphite  
Wels Rating: 6 Star, 4.5L/Min  
Wels REG No. T41349



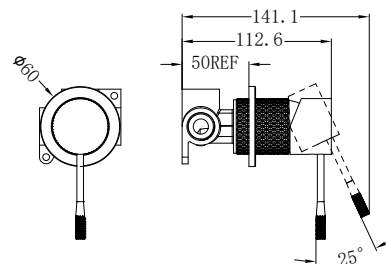
NR251909GR

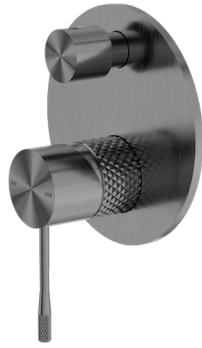
Opal Shower Mixer With 80mm Plate  
Graphite  
Wels Rating: N/A



NR251909hGR

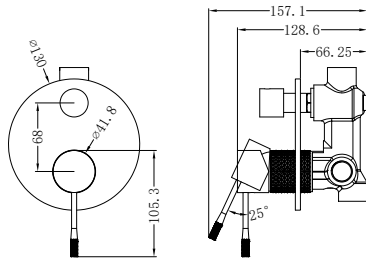
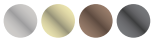
Opal Shower Mixer With 60mm Plate  
Graphite  
Wels Rating: N/A





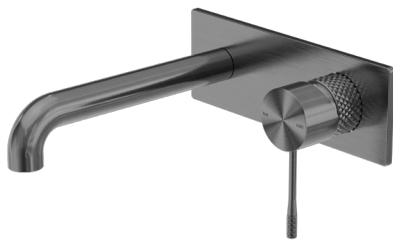
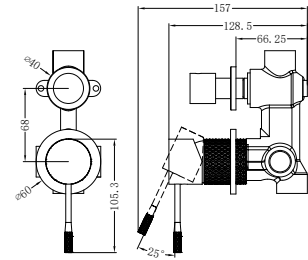
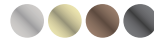
**NR251909aGR**

Opal Shower Mixer With Divertor  
Graphite  
Wels Rating: N/A



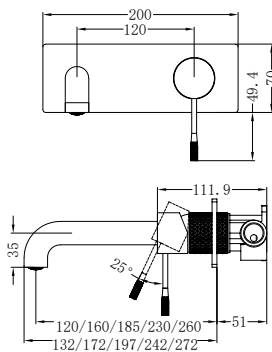
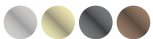
**NR251909eGR**

Opal Shower Mixer With Divertor Separate Plate  
Graphite  
Wels Rating: N/A



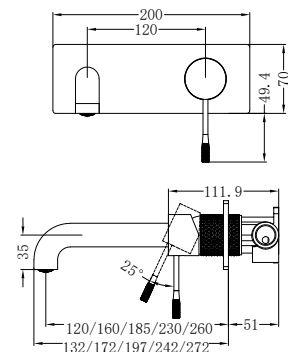
**NR251907a120GR/NR251907a160GR**  
**NR251907aGR/NR251907a230GR/NR251907a260GR**

Opal Wall Basin/Bath Mixer 120/160/185/230/260mm  
Graphite  
Wels Rating: 5 Star, 6L/Min  
Wels REG No. T43325/T43326/T43324/T43327/T43328





**NR251907b120GR/NR251907b160GR**  
**NR251907bGR/NR251907b230GR/NR251907b260GR**

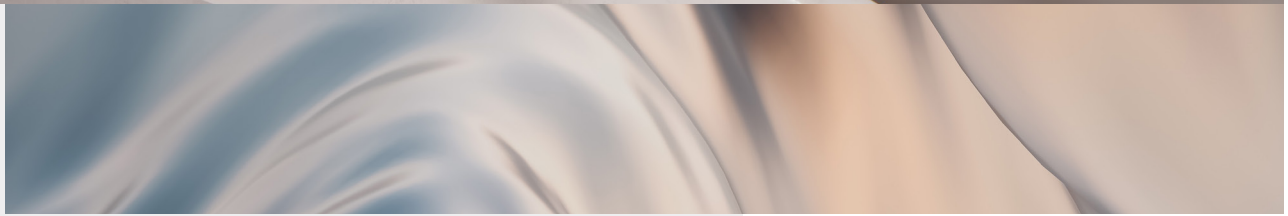
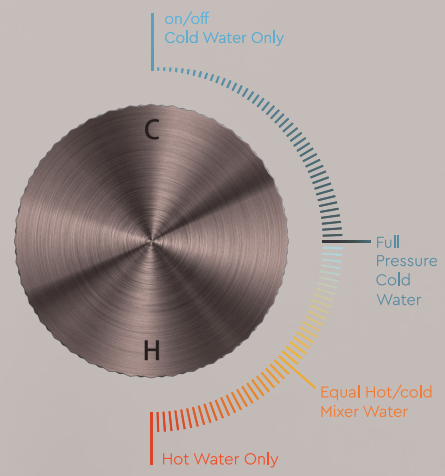
Opal Wall Basin/Bath Mixer 120/160/185/230/260mm  
Separate Back Plate Graphite  
Wels Rating: 5 Star, 6L/Min  
Wels REG No. T43330/T43331/T43329/T43332/T43333



# OPAL PROGRESSIVE

- 
- |                                                                                                   |                                                                                                    |
|---------------------------------------------------------------------------------------------------|----------------------------------------------------------------------------------------------------|
|  Brushed Nickel |  Brushed Bronze |
|  Brushed Gold   |  Graphite       |
- 

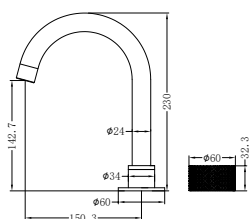






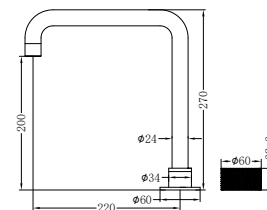
**NR252001BN**

Opal Progressive Basin Set Brushed Nickel  
 Wels Rating: 6 Star, 4.5L/Min  
 Wels REG No. T35958



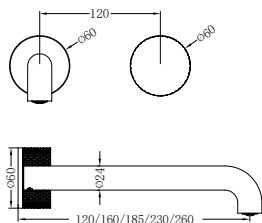
**NR252001aBN**

Opal Progressive Tall Basin Set Brushed Nickel  
 Wels Rating: 5 Star, 6L/Min  
 Wels REG No. T35924



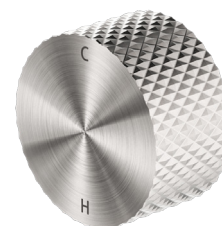
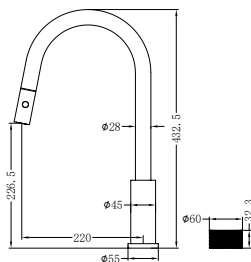
**NR252007a120BN/NR252007a160BN**  
**NR252007a185BN/NR252007a230BN**  
**NR252007a260BN**

Opal Progressive Wall Basin/Bath Set 120/160/185/230/260mm Brushed Nickel  
 Wels Rating: 5 Star, 6L/Min  
 Wels REG No. T41903/T40549/T40550/T40551/T41904



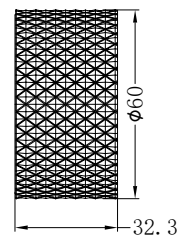
**NR252008BN**

Opal Progressive Pull Out Kitchen Set Brushed Nickel  
 Wels Rating: 6 Star, 4.5L/Min  
 Wels REG No. T41356



**NR252009BN**

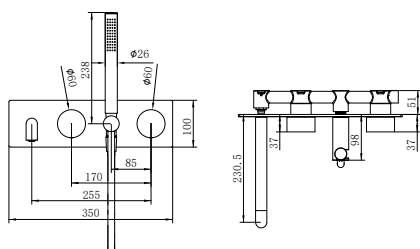
Opal Progressive Shower Mixer Brushed Nickel  
 Wels Rating: N/A





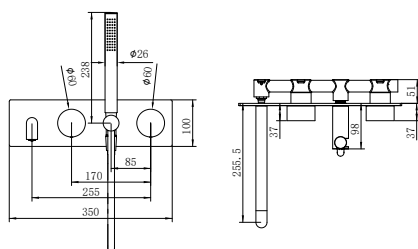
NR252003a230BN

Opal Progressive Shower System  
With Spout 230mm Brushed Nickel  
Wels Rating: 3 Star, 8L/Min  
Wels REG No. S18030



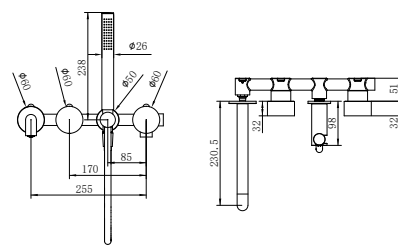
NR252003a250BN

Opal Progressive Shower System  
With Spout 250mm Brushed Nickel  
Wels Rating: 3 Star, 8L/Min  
Wels REG No. S18046



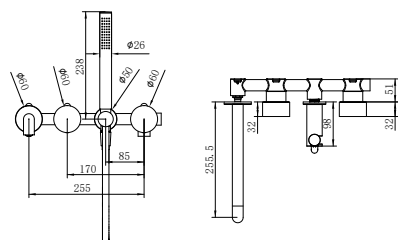
NR252003b230BN

Opal Progressive Shower System Separate  
Plate With Spout 230mm Brushed Nickel  
Wels Rating: 3 Star, 8L/Min  
Wels REG No. S18045



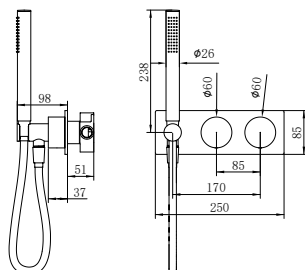
NR252003b250BN

Opal Progressive Shower System Separate  
Plate With Spout 250mm Brushed Nickel  
Wels Rating: 3 Star, 8L/Min  
Wels REG No. S18044



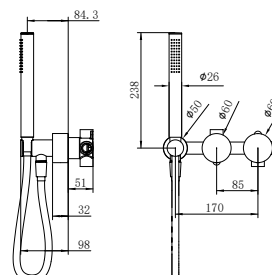
NR252003cBN

Opal Progressive Shower System  
Brushed Nickel  
Wels Rating: 3 Star, 8L/Min  
Wels REG No. S18042



NR252003dBN

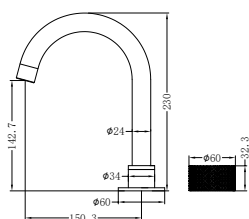
Opal Progressive Shower System  
Separate Plate Brushed Nickel  
Wels Rating: 3 Star, 8L/Min  
Wels REG No. S18043





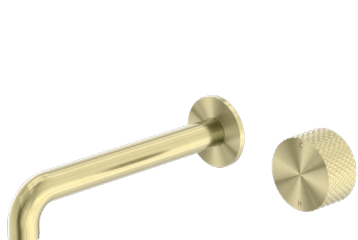
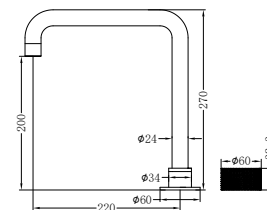
**NR252001BG**

Opal Progressive Basin Set Brushed Gold  
 Wels Rating: 6 Star, 4.5L/Min  
 Wels REG No. T35958



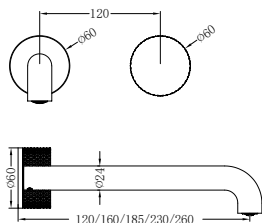
**NR252001aBG**

Opal Progressive Tall Basin Set Brushed Gold  
 Wels Rating: 5 Star, 6L/Min  
 Wels REG No. T35924



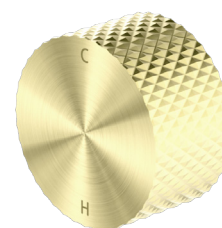
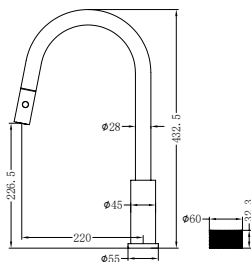
**NR252007a120BG/NR252007a160BG**  
**NR252007a185BG/NR252007a230BG**  
**NR252007a260BG**

Opal Progressive Wall Basin/Bath Set 120/160/185/230/260mm Brushed Gold  
 Wels Rating: 5 Star, 6L/Min  
 Wels REG No. T41903/T40549/T40550/T40551/T41904



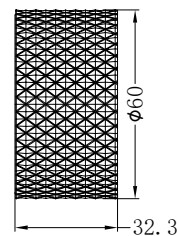
**NR252008BG**

Opal Progressive Pull Out Kitchen Set  
 Brushed Gold  
 Wels Rating: 6 Star, 4.5L/Min  
 Wels REG No. T41356



**NR252009BG**

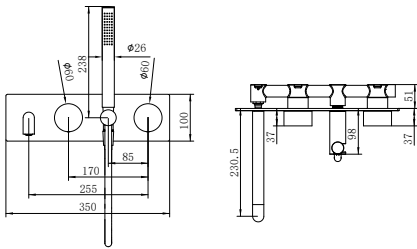
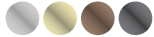
Opal Progressive Shower Mixer  
 Brushed Gold  
 Wels Rating: N/A





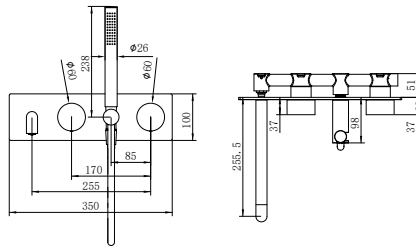
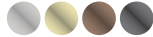
**NR252003a230BG**

Opal Progressive Shower System  
With Spout 230mm Brushed Gold  
Wels Rating: 3 Star, 8L/Min  
Wels REG No. S18030



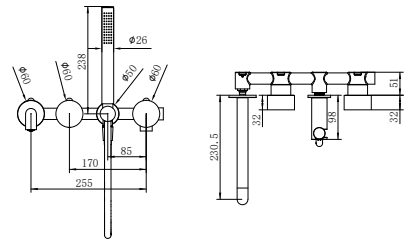
**NR252003a250BG**

Opal Progressive Shower System  
With Spout 250mm Brushed Gold  
Wels Rating: 3 Star, 8L/Min  
Wels REG No. S18046



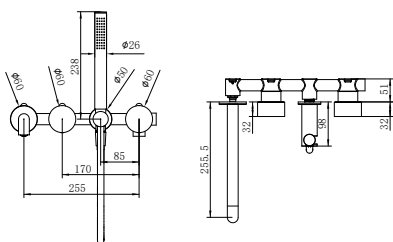
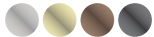
**NR252003b230BG**

Opal Progressive Shower System Separate  
Plate With Spout 230mm Brushed Gold  
Wels Rating: 3 Star, 8L/Min  
Wels REG No. S18045



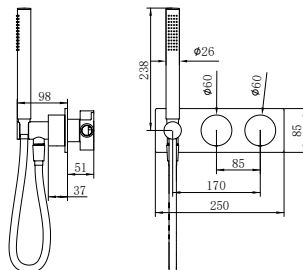
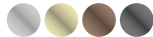
**NR252003b250BG**

Opal Progressive Shower System Separate  
Plate With Spout 250mm Brushed Gold  
Wels Rating: 3 Star, 8L/Min  
Wels REG No. S18044



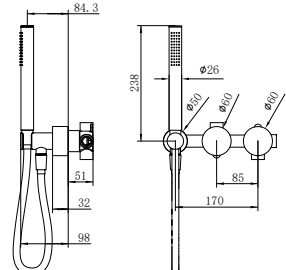
**NR252003cBG**

Opal Progressive Shower System  
Brushed Gold  
Wels Rating: 3 Star, 8L/Min  
Wels REG No. S18042



**NR252003dBG**

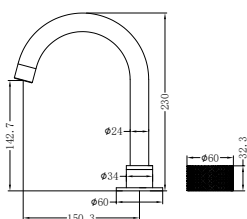
Opal Progressive Shower System  
Separate Plate Brushed Gold  
Wels Rating: 3 Star, 8L/Min  
Wels REG No. S18043





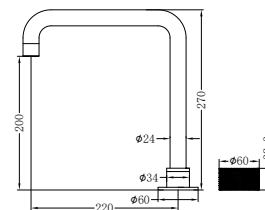
**NR252001BZ**

Opal Progressive Basin Set Brushed Bronze  
 Wels Rating: 6 Star, 4.5L/Min  
 Wels REG No. T35958



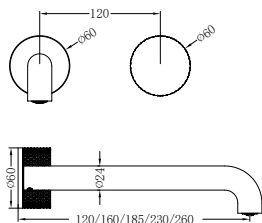
**NR252001aBZ**

Opal Progressive Tall Basin Set Brushed Bronze  
 Wels Rating: 5 Star, 6L/Min  
 Wels REG No. T35924



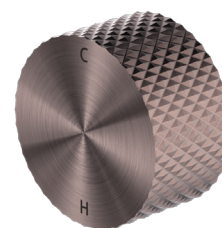
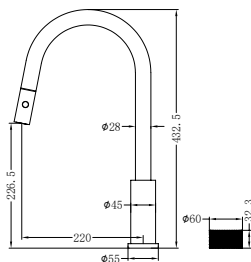
**NR252007a120BZ/NR252007a160BZ  
 NR252007a185BZ/NR252007a230BZ  
 NR252007a260BZ**

Opal Progressive Wall Basin/Bath Set 120/160/185/230/260mm Brushed Bronze  
 Wels Rating: 5 Star, 6L/Min  
 Wels REG No. T41903/T40549/T40550/T40551/T41904



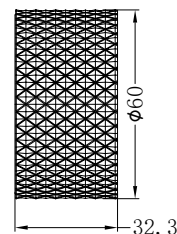
**NR252008BZ**

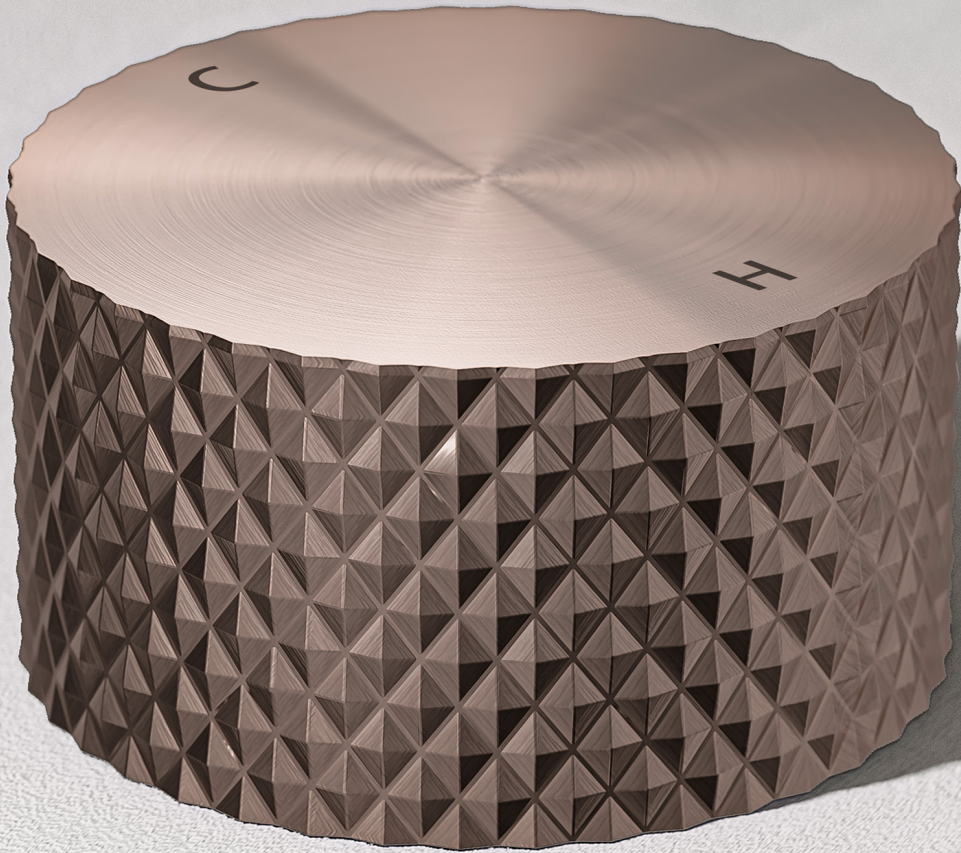
Opal Progressive Pull Out Kitchen Set Brushed Bronze  
 Wels Rating: 6 Star, 4.5L/Min  
 Wels REG No. T41356



**NR252009BZ**

Opal Progressive Shower Mixer Brushed Bronze  
 Wels Rating: N/A





Shower Mixer

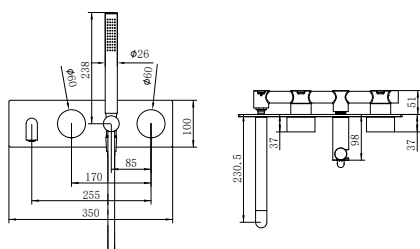


Opal Progressive Shower System



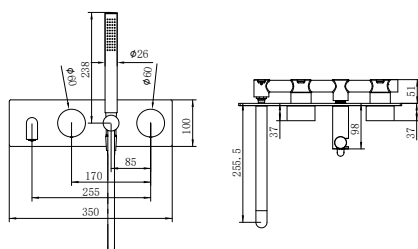
NR252003a230BZ

Opal Progressive Shower System  
With Spout 230mm Brushed Bronze  
Wels Rating: 3 Star, 8L/Min  
Wels REG No. S18030



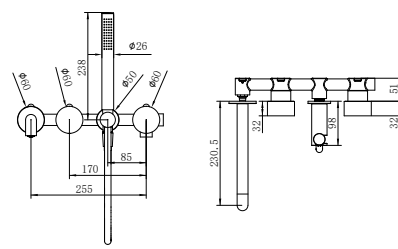
NR252003a250BZ

Opal Progressive Shower System  
With Spout 250mm Brushed Bronze  
Wels Rating: 3 Star, 8L/Min  
Wels REG No. S18046



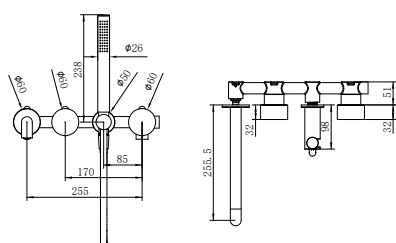
NR252003b230BZ

Opal Progressive Shower System Separate  
Plate With Spout 230mm Brushed Bronze  
Wels Rating: 3 Star, 8L/Min  
Wels REG No. S18045



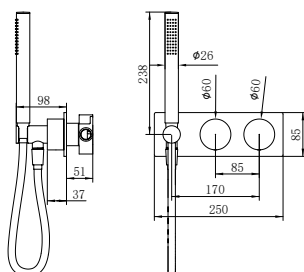
NR252003b250BZ

Opal Progressive Shower System Separate  
Plate With Spout 250mm Brushed Bronze  
Wels Rating: 3 Star, 8L/Min  
Wels REG No. S18044



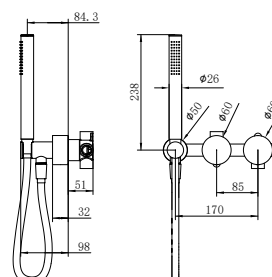
NR252003cBZ

Opal Progressive Shower System  
Brushed Bronze  
Wels Rating: 3 Star, 8L/Min  
Wels REG No. S18042



NR252003dBZ

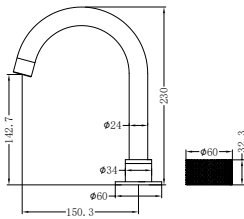
Opal Progressive Shower System  
Separate Plate Brushed Bronze  
Wels Rating: 3 Star, 8L/Min  
Wels REG No. S18043





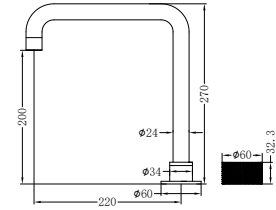
**NR252001GR**

Opal Progressive Basin Set Graphite  
 Wels Rating: 6 Star, 4.5L/Min  
 Wels REG No. T35958



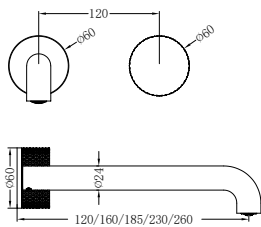
**NR252001aGR**

Opal Progressive Tall Basin Set Graphite  
 Wels Rating: 5 Star, 6L/Min  
 Wels REG No. T35924



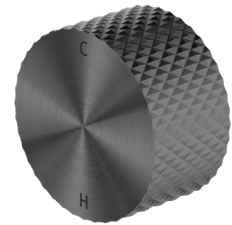
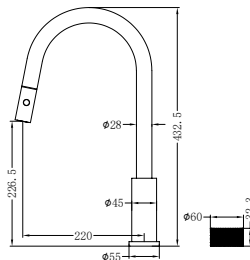
**NR252007a120GR/NR252007a160GR  
 NR252007a185GR/NR252007a230GR  
 NR252007a260GR**

Opal Progressive Wall Basin/Bath Set 120  
 /160/185/230/260mm Graphite  
 Wels Rating: 5 Star, 6L/Min  
 Wels REG No. T41903/T40549/T40550  
 /T40551/T41904



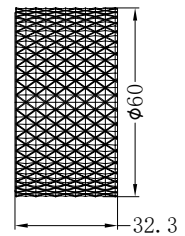
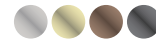
**NR252008GR**

Opal Progressive Pull Out Kitchen Set  
 Graphite  
 Wels Rating: 6 Star, 4.5L/Min  
 Wels REG No. T41356



**NR252009GR**

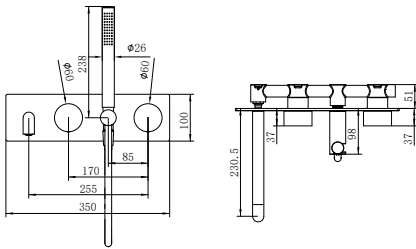
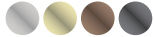
Opal Progressive Shower Mixer  
 Graphite  
 Wels Rating: N/A





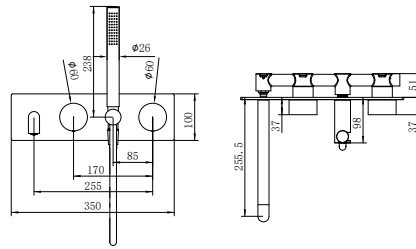
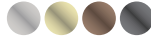
NR252003a230GR

Opal Progressive Shower System  
With Spout 230mm Graphite  
Wels Rating: 3 Star, 8L/Min  
Wels REG No. S18030



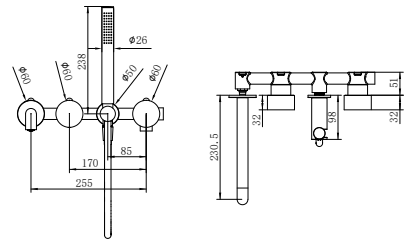
NR252003a250GR

Opal Progressive Shower System  
With Spout 250mm Graphite  
Wels Rating: 3 Star, 8L/Min  
Wels REG No. S18046



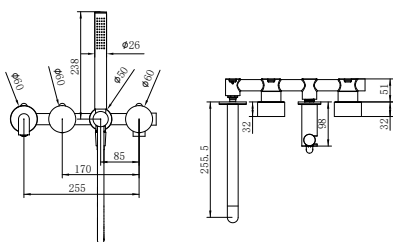
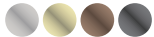
NR252003b230GR

Opal Progressive Shower System Separate  
Plate With Spout 230mm Graphite  
Wels Rating: 3 Star, 8L/Min  
Wels REG No. S18045



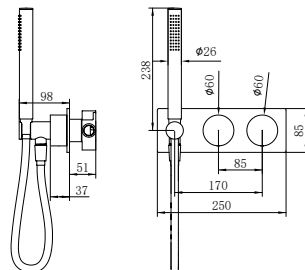
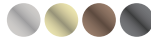
NR252003b250GR

Opal Progressive Shower System Separate  
Plate With Spout 250mm Graphite  
Wels Rating: 3 Star, 8L/Min  
Wels REG No. S18044



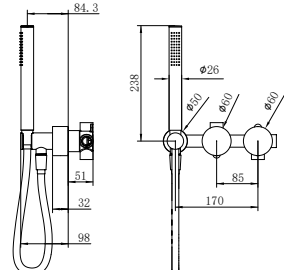
NR252003cGR

Opal Progressive Shower System  
Graphite  
Wels Rating: 3 Star, 8L/Min  
Wels REG No. S18042



NR252003dGR

Opal Progressive Shower System  
Separate Plate Graphite  
Wels Rating: 3 Star, 8L/Min  
Wels REG No. S18043



# BATHROOM ACCESSORIES

---

 Brushed Nickel

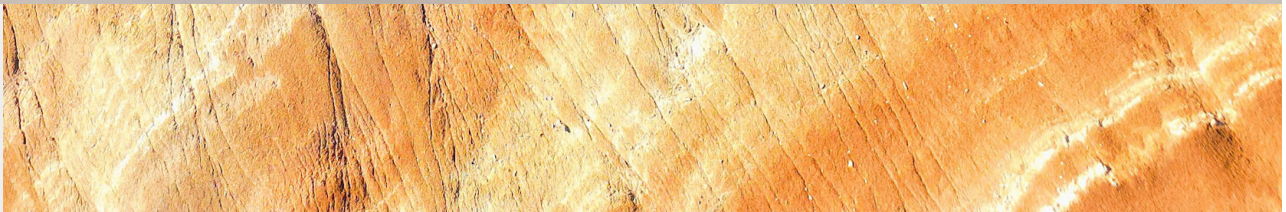
 Brushed Bronze

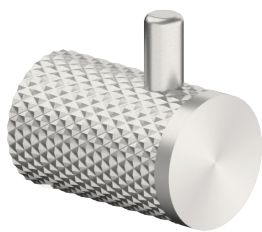
 Brushed Gold

 Graphite

---

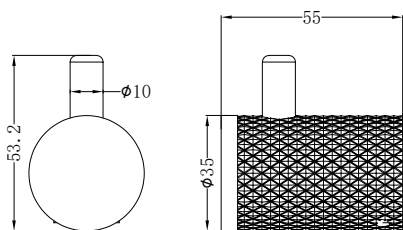






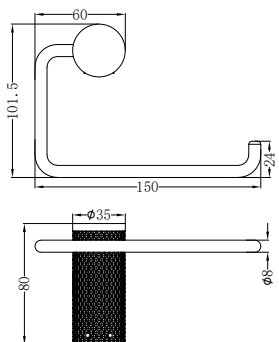
NR2582BN

Opal Robe Hook  
Brushed Nickel



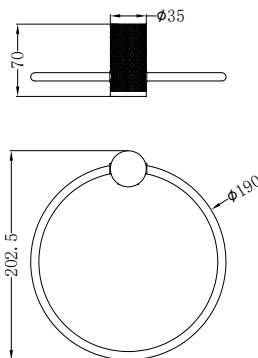
NR2586BN

Opal Toilet Roll Holder  
Brushed Nickel



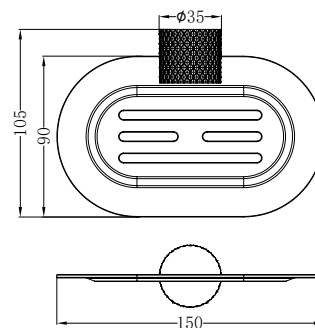
NR2580aBN

Opal Towel Ring  
Brushed Nickel



NR2581BN

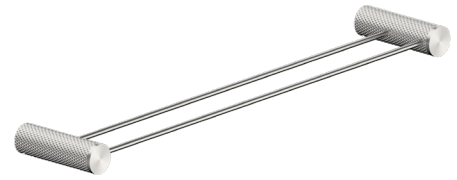
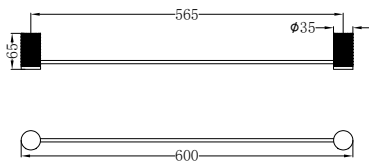
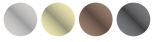
Opal Soap Dish Holder  
Brushed Nickel





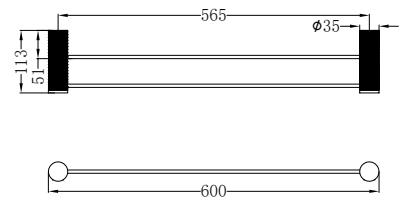
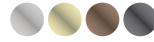
**NR2524BN**

Opal Single Towel Rail 600mm  
Brushed Nickel



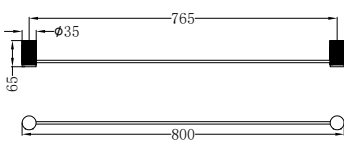
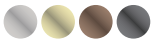
**NR2524dBN**

Opal Double Towel Rail 600mm  
Brushed Nickel



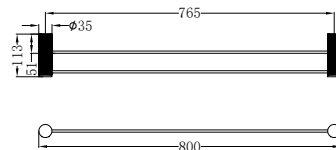
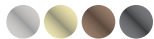
**NR2530BN**

Opal Single Towel Rail 800mm  
Brushed Nickel



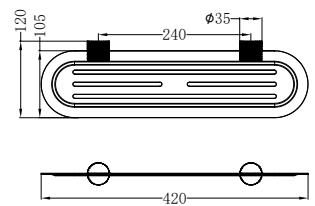
**NR2530dBN**

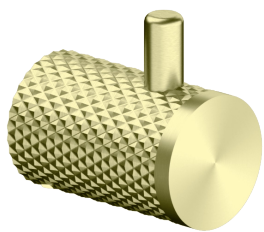
Opal Double Towel Rail 800mm  
Brushed Nickel



**NR2587aBN**

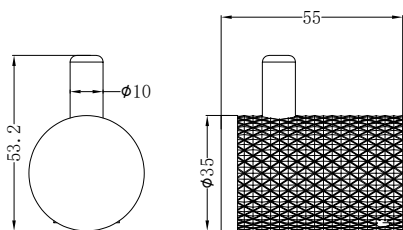
Opal Metal Shower Shelf  
Brushed Nickel





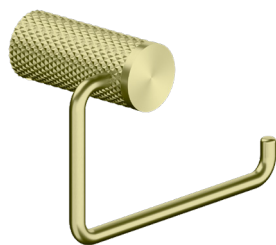
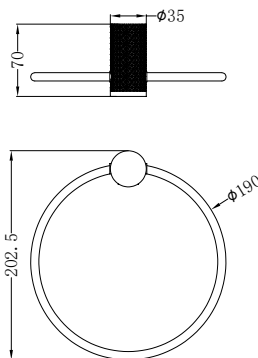
**NR2582BG**

Opal Robe Hook  
Brushed Gold



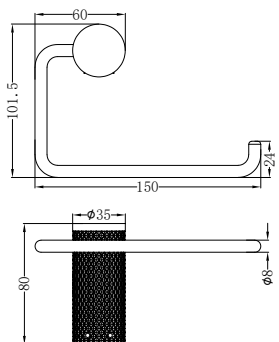
**NR2580aBG**

Opal Towel Ring  
Brushed Gold



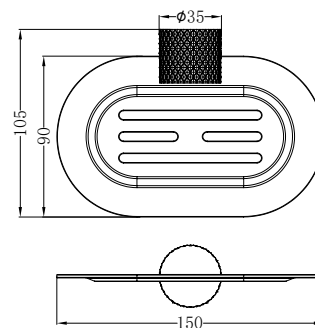
**NR2586BG**

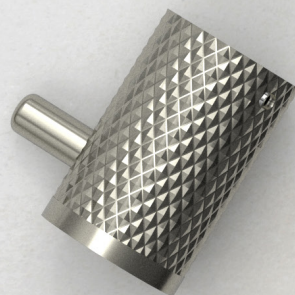
Opal Toilet Roll Holder  
Brushed Gold



**NR2581BG**

Opal Soap Dish Holder  
Brushed Gold





# Bathroom Accessories

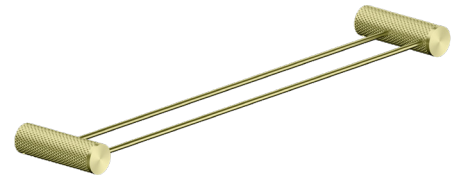
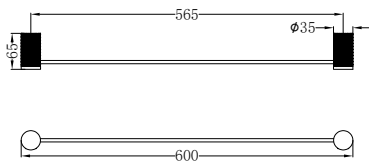
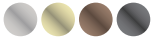


# Bathroom Accessories



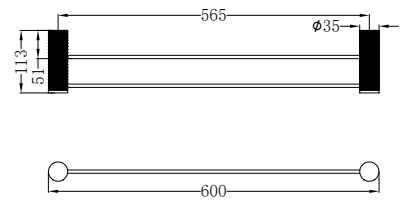
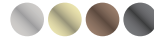
**NR2524BG**

Opal Single Towel Rail 600mm  
Brushed Gold



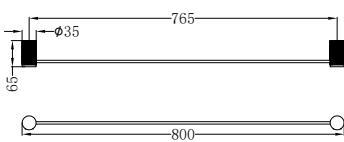
**NR2524dBG**

Opal Double Towel Rail 600mm  
Brushed Gold



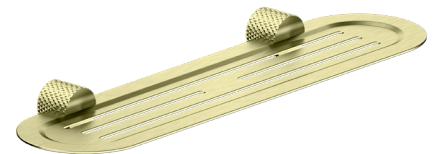
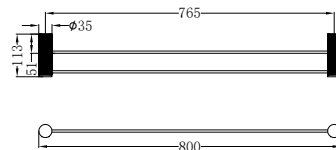
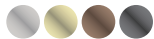
**NR2530BG**

Opal Single Towel Rail 800mm  
Brushed Gold



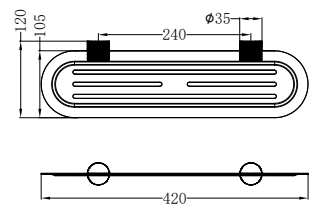
**NR2530dBG**

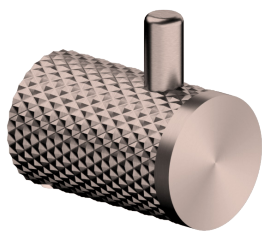
Opal Double Towel Rail 800mm  
Brushed Gold



**NR2587dBG**

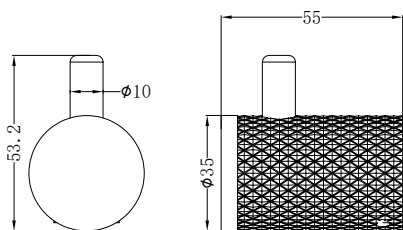
Opal Metal Shower Shelf  
Brushed Gold





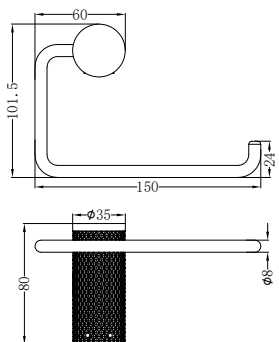
NR2582BZ

Opal Robe Hook  
Brushed Bronze



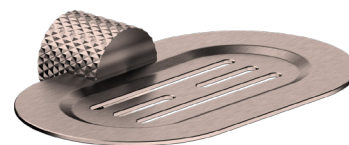
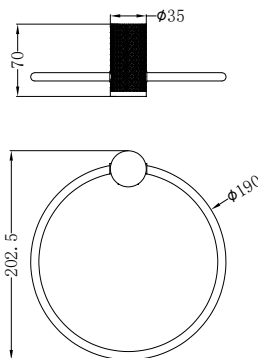
NR2586BZ

Opal Toilet Roll Holder  
Brushed Bronze



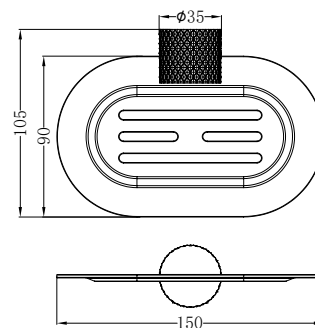
NR2580aBZ

Opal Towel Ring  
Brushed Bronze



NR2581BZ

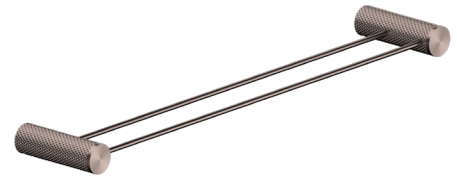
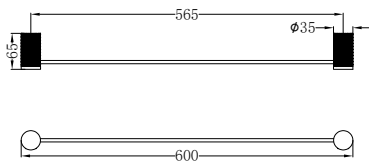
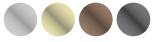
Opal Soap Dish Holder  
Brushed Bronze





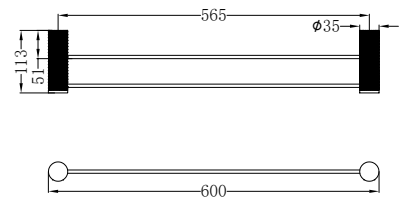
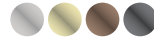
**NR2524BZ**

Opal Single Towel Rail 600mm  
Brushed Bronze



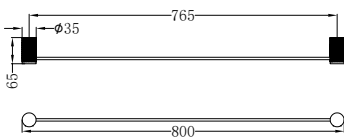
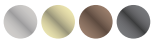
**NR2524dBZ**

Opal Double Towel Rail 600mm  
Brushed Bronze



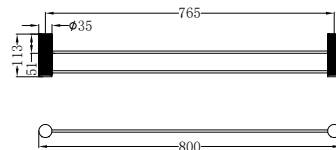
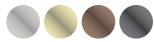
**NR2530BZ**

Opal Single Towel Rail 800mm  
Brushed Bronze



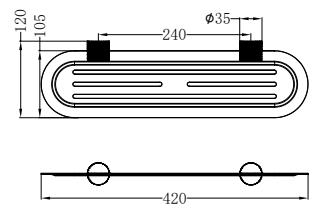
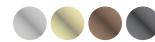
**NR2530dBZ**

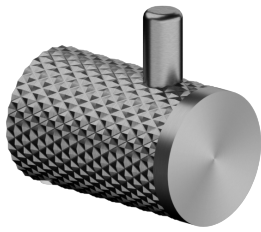
Opal Double Towel Rail 800mm  
Brushed Bronze



**NR2587dBZ**

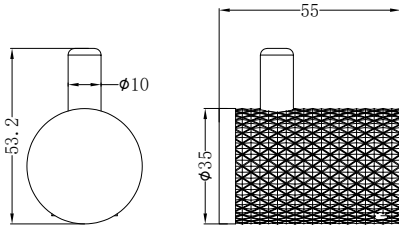
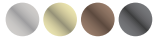
Opal Metal Shower Shelf  
Brushed Bronze





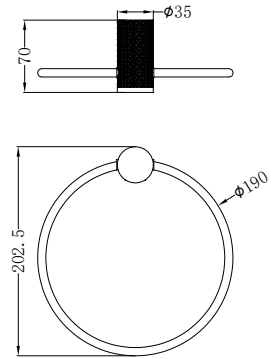
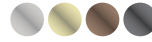
NR2582GR

Opal Robe Hook  
Graphite



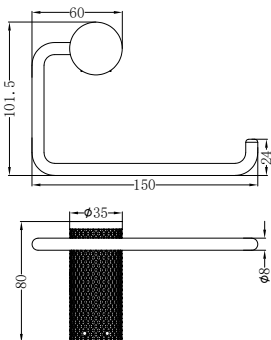
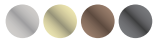
NR2580aGR

Opal Towel Ring  
Graphite



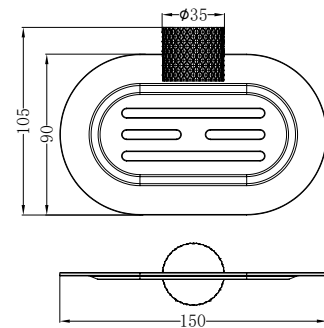
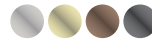
NR2586GR

Opal Toilet Roll Holder  
Graphite



NR2581GR

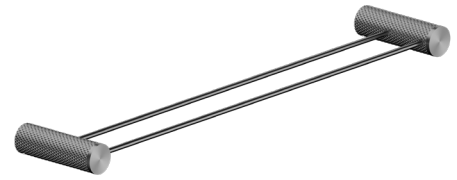
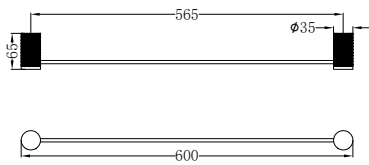
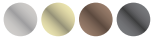
Opal Soap Dish Holder  
Graphite





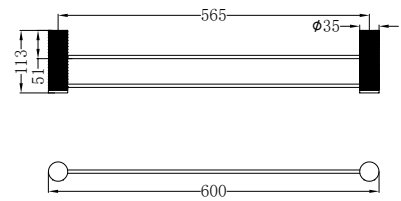
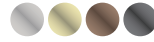
**NR2524GR**

Opal Single Towel Rail 600mm  
Graphite



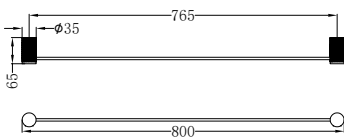
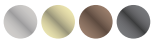
**NR2524dGR**

Opal Double Towel Rail 600mm  
Graphite



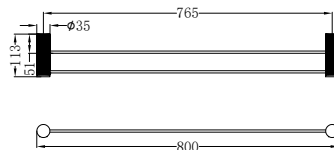
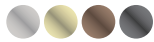
**NR2530GR**

Opal Single Towel Rail 800mm  
Graphite



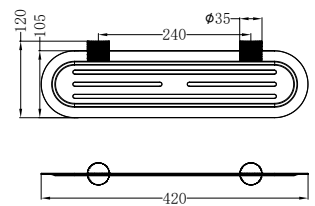
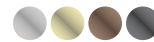
**NR2530dGR**

Opal Double Towel Rail 800mm  
Graphite





**NR2587aGR**

Opal Metal Shower Shelf  
Graphite

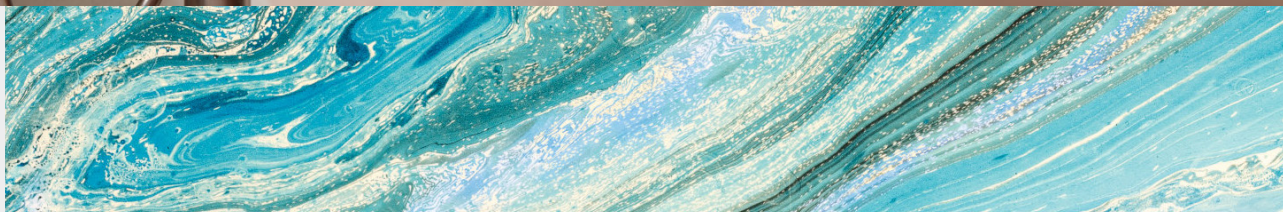


# SHOWERS

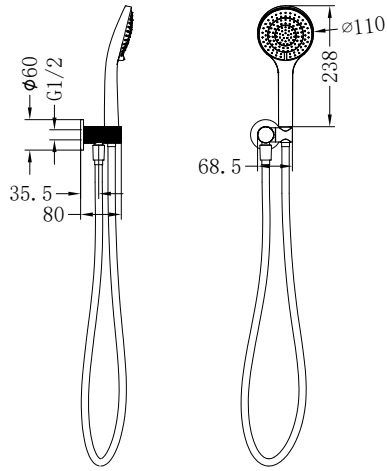
---

-  Brushed Nickel
  -  Brushed Bronze
  -  Brushed Gold
  -  Graphite
- 





Opal Shower On Bracket With Air Shower  
 Wels Rating: 3 Star, 9L/Min  
 Wels REG No. S15169



Shower Angle Adjustable

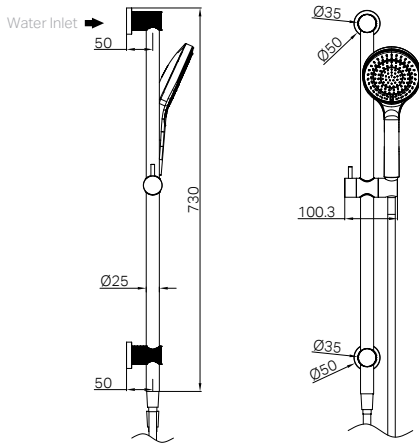


Brushed Nickel  
NR251905BN



Brushed Gold  
NR251905BG

Opal Shower Rail With Air Shower  
 Wels Rating: 3 Star, 9L/Min  
 Wels REG No. S15219

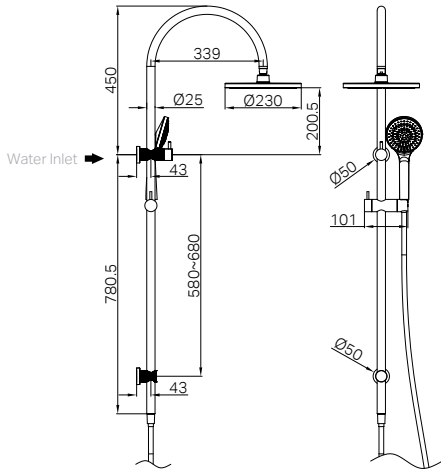


Brushed Nickel  
NR251905aBN



Brushed Gold  
NR251905aBG

Opal Twin Shower Set With Air Shower  
Wels Rating: Overhead Shower 3 Star, 9L/Min  
Hand Shower 3 Star, 9L/Min  
Wels REG No. S17347



Brushed Nickel  
NR251905bBN



Brushed Gold  
NR251905bBG



NR251905cBN

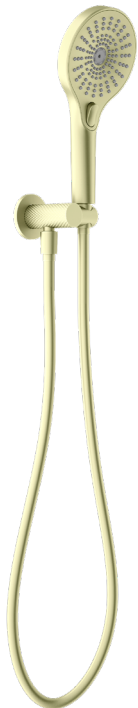
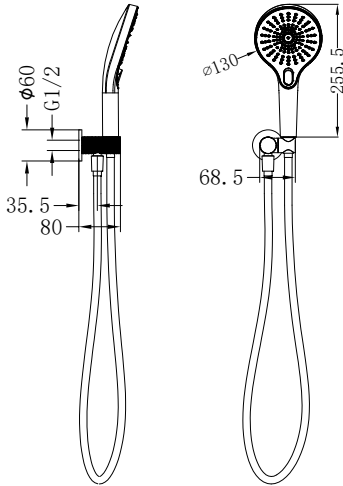
Opal Shower On Bracket Brushed Nickel

Wels Rating: 3 Star, 9L/Min

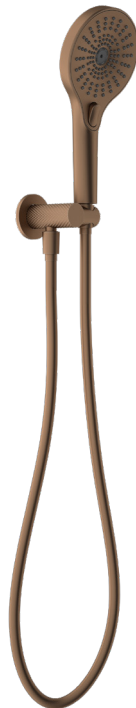
Wels REG No. S15225



Shower Angle Adjustable



Brushed Gold  
NR251905cBG



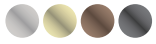
Brushed Bronze  
NR251905cBZ



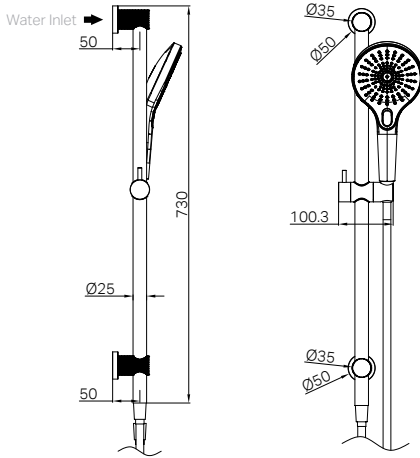
Graphite  
NR251905cGR

NR251905dBN

Opal Shower Rail Brushed Nickel  
Wels Rating: 3 Star, 9L/Min  
Wels REG No. S15221



Water Inlet →



Brushed Gold  
NR251905dBG



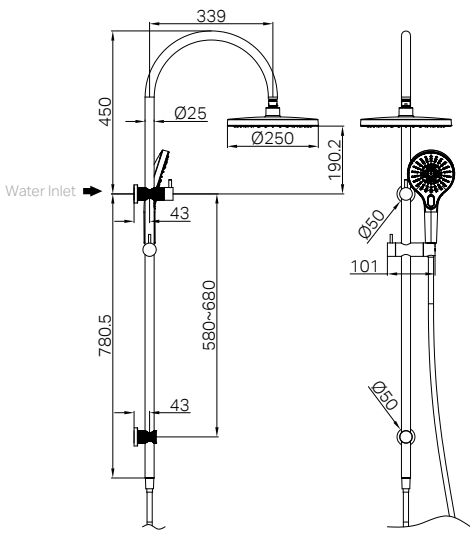
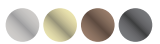
Brushed Bronze  
NR251905dBZ



Graphite  
NR251905dGR

NR251905eBN

Opal Twin Shower Brushed Nickel  
Wels Rating: Overhead Shower 3 Star, 9L/Min  
Hand Shower 3 Star, 9L/Min  
Wels REG No. S17338



Brushed Gold  
NR251905eBG

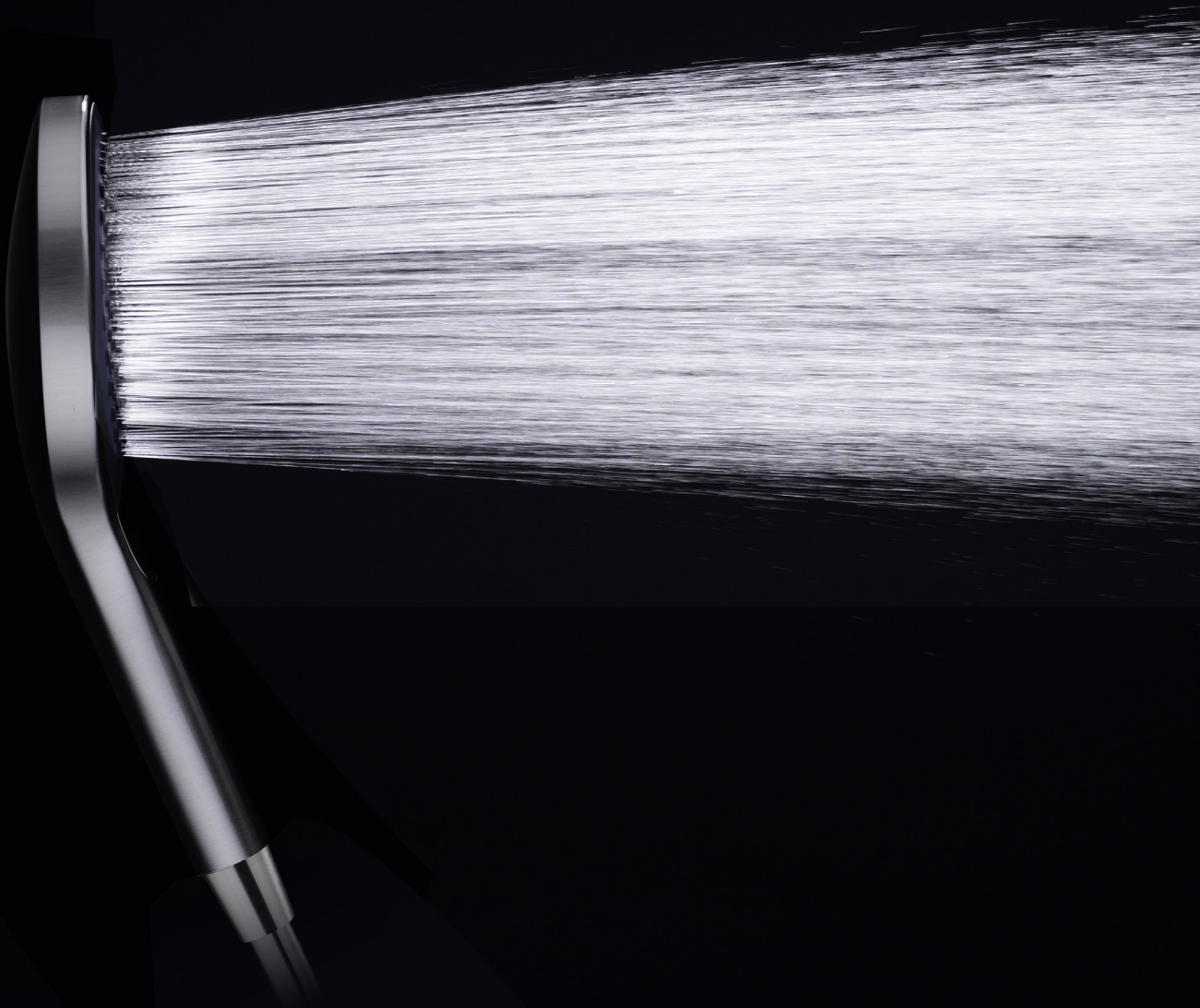


Brushed Bronze  
NR251905eBZ



Graphite  
NR251905eGR





## Air Shower II

This new Air Shower II is going to completely transform the way you look at showering.

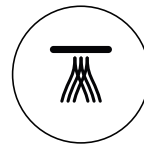
Our product development team have redesigned the shower nozzles with 4 times as many holes compared to the first generation for an even more delicate splash and lighter, airier feel.

Hand-held Air shower II has 76 nodules, each with 4 holes, hence providing you with the ultimate showering experience. Air Shower II also comes with increased functionality with the inclusion of superior decontamination. Forget the worries of clogging outlet holes due to water quality problems as you can get rid of residual deposits at a touch of a button.

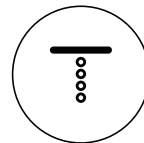
This provides you with the same luxurious feel from the first time you experience it until the last.



Air Shower Mode



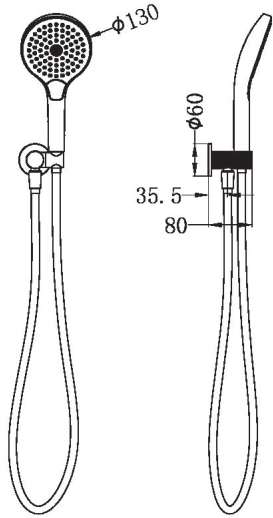
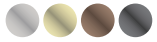
Water Mist Mode



Microbubble Mode

NR251905fBN

Opal Shower On Bracket With Air Shower II  
Brushed Nickel  
Wels Rating: 3 Star, 9L/Min  
Wels REG No. S17299



Shower Angle Adjustable



Brushed Gold  
NR251905fBG



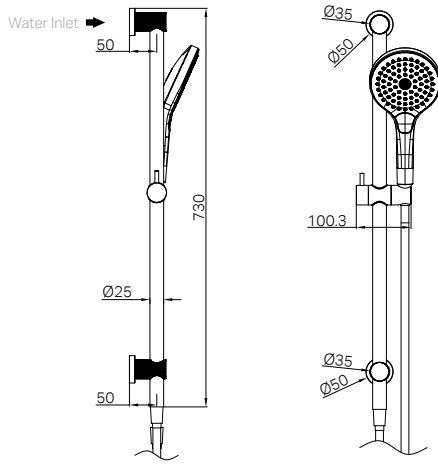
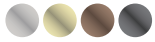
Brushed Bronze  
NR251905fBZ



Graphite  
NR251905fGR

NR251905gBN

Opal Shower Rail With Air Shower II  
Brushed Nickel  
Wels Rating: 3 Star, 9L/Min  
Wels REG No. S17301



Brushed Gold  
NR251905gBG



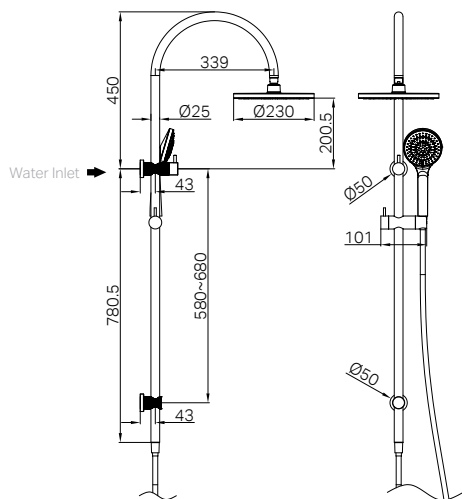
Brushed Bronze  
NR251905gBZ



Graphite  
NR251905gGR

**NR251905hBN**

Opal Twin Shower With Air Shower II  
 Brushed Nickel  
 Wels Rating: Overhead Shower 3 Star, 9L/Min  
 Hand Shower 3 Star, 9L/Min  
 Wels REG No. S17340



**Brushed Gold**  
NR251905hBG



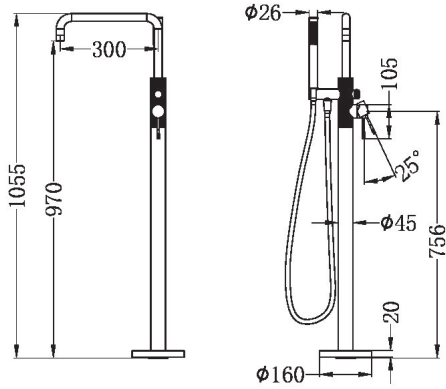
**Brushed Bronze**  
NR251905hBZ



**Graphite**  
NR251905hGR

**NR251903aBN**

Opal Freestanding Bath Mixer With Hand Shower  
 Brushed Nickel  
 Wels Rating: 3 Star, 9L/Min  
 Wels REG No. S17464



**Brushed Gold**  
NR251903aBG



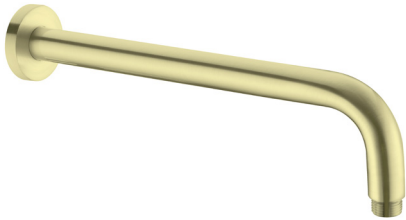
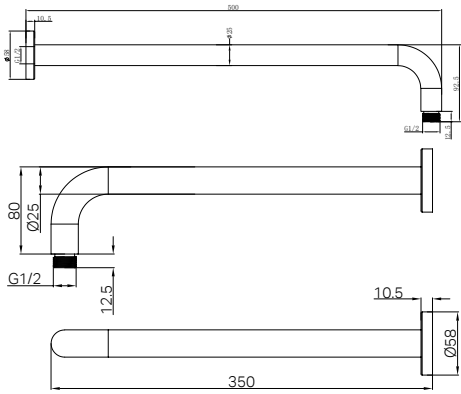
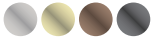
**Brushed Bronze**  
NR251903aBZ



**Graphite**  
NR251903aGR

**NR502/502IBN**

Round Shower Arm 330/500mm Length  
Brushed Nickel



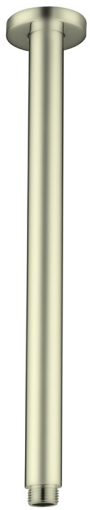
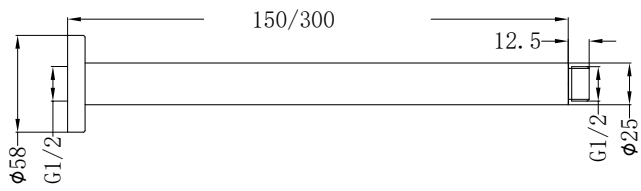
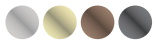
**Brushed Gold**  
NR502BG  
NR502IBG

**Brushed Bronze**  
NR502BZ  
NR502IBZ

**Graphite**  
NR502GR  
NR502IGR

NR503300BN

Round Ceiling Arm 300 mm Length  
Brushed Nickel



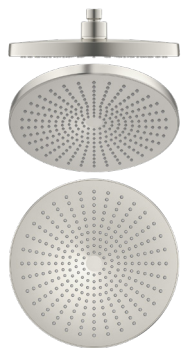
Brushed Gold  
NR503300BG



Brushed Bronze  
NR503150 / 300BZ

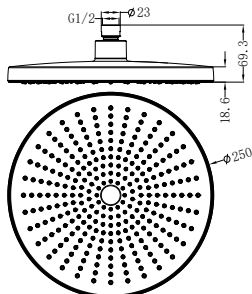


Graphite  
NR503150 / 300GR



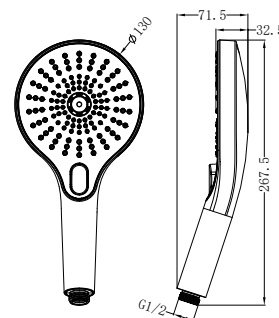
**NR508079BN**

250mm Opal Shower Head Brushed Nickel  
 Wels Rating: 3 Star, 9L/Min  
 Wels REG No. S17297



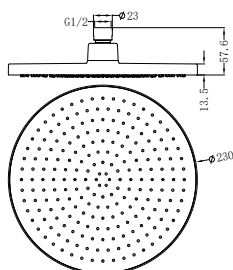
**NR508077BN**

Opal Hand Shower Brushed Nickel  
 Wels Rating: 3 Star, 9L/Min  
 Wels REG No. S15216



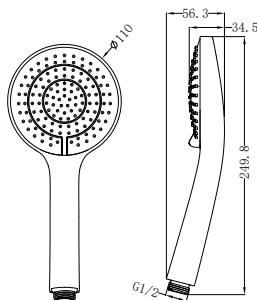
**NR508076BN**

230mm Air Shower Head Brushed Nickel  
 Wels Rating: 3 Star, 9L/Min  
 Wels REG No. S17296



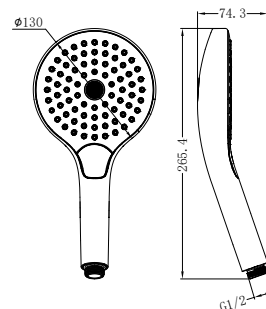
**NR508074BN**

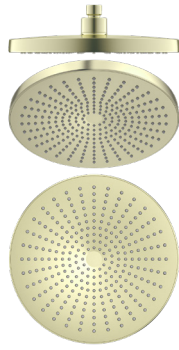
Air Hand Shower Brushed Nickel  
 Water Rating: 3 Star, 9L/Min  
 Wels REG No. S15215



**NR508002BN**

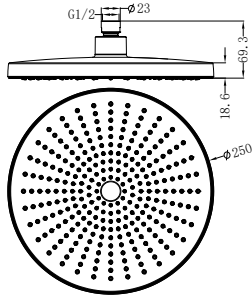
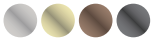
Air Hand Shower II Brushed Nickel  
 Wels Rating: 3 Star, 9L/Min  
 Wels REG No. S17336





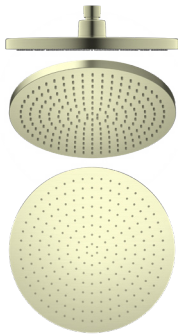
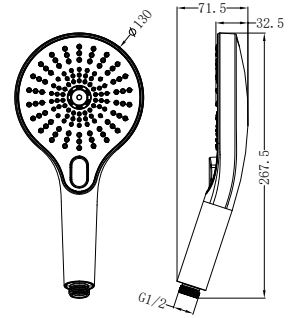
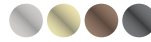
**NR508079BG**

250mm Opal Shower Head Brushed Gold  
 Wels Rating: 3 Star, 9L/Min  
 Wels REG No. S17297



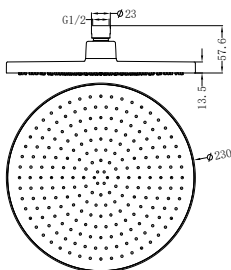
**NR508077BG**

Opal Hand Shower Brushed Gold  
 Wels Rating: 3 Star, 9L/Min  
 Wels REG No. S15216



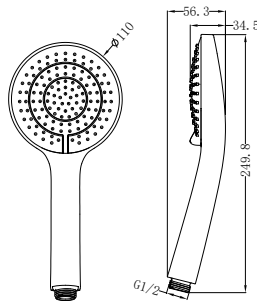
**NR508076BG**

230mm Air Shower Head Brushed Gold  
 Wels Rating: 3 Star, 9L/Min  
 Wels REG No. S17296



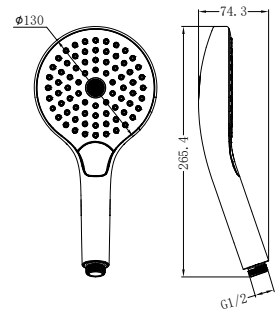
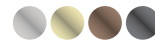
**NR508074BG**

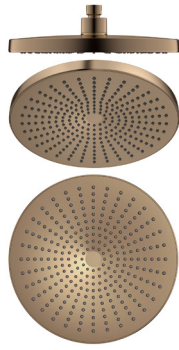
Air Hand Shower Brushed Gold  
 Water Rating: 3 Star, 9L/Min  
 Wels REG No. S15215



**NR508002BG**

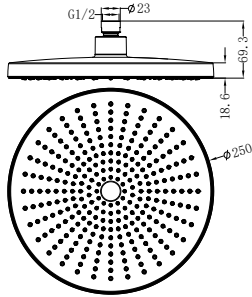
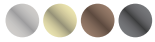
Air Hand Shower II Brushed Gold  
 Wels Rating: 3 Star, 9L/Min  
 Wels REG No. S17336





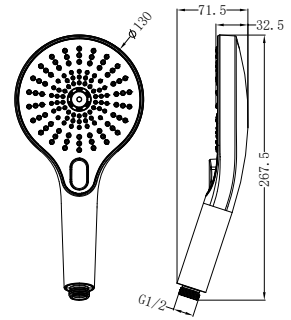
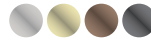
**NR508079BZ**

250mm Opal Shower Head Brushed Bronze  
 Wels Rating: 3 Star, 9L/Min  
 Wels REG No. S17297



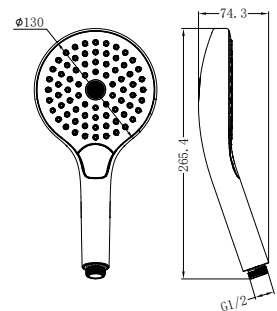
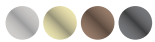
**NR508077BZ**

Opal Hand Shower Brushed Bronze  
 Wels Rating: 3 Star, 9L/Min  
 Wels REG No. S15216



**NR508002BZ**

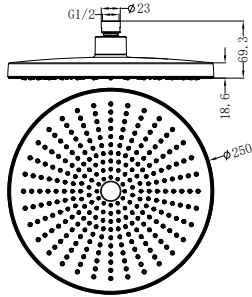
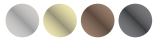
Air Hand Shower II Brushed Bronze  
 Wels Rating: 3 Star, 9L/Min  
 Wels REG No. S17336





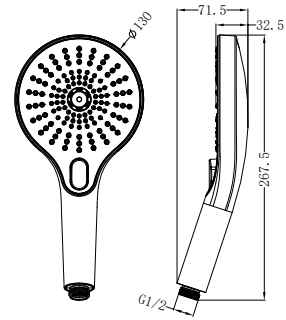
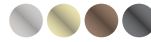
**NR508079GR**

250mm Opal Shower Head Graphite  
 Wels Rating: 3 Star, 9L/Min  
 Wels REG No. S17297



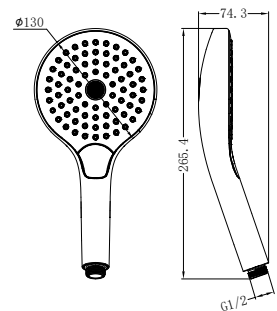
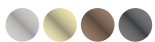
**NR508077GR**

Opal Hand Shower Graphite  
 Wels Rating: 3 Star, 9L/Min  
 Wels REG No. S15216




**NR508002GR**

Air Hand Shower II Graphite  
 Wels Rating: 3 Star, 9L/Min  
 Wels REG No. S17336




# OTHERS ACCESSORIES

---

 Brushed Nickel

 Brushed Bronze

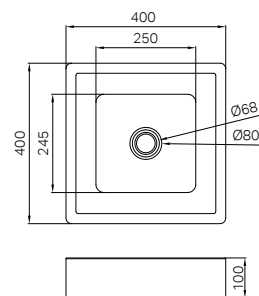
 Brushed Gold

 Graphite

---







**NRB401sBN**

Note: Pop-up Waste Not Included

Square 400mm Stainless Steel Basin  
Brushed Nickel



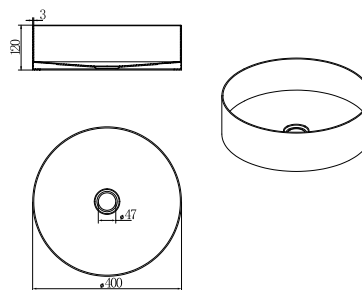
**Brushed Gold**  
NRB401sBG



**Brushed Bronze**  
NRB401sBZ



**Graphite**  
NRB401sGR



Note: Pop-up Waste Not Included

**NRB401rBN**

Round 400mm Stainless Steel Basin  
Brushed Nickel



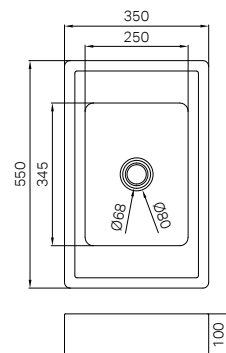
**Brushed Gold**  
NRB401rBG



**Brushed Bronze**  
NRB401rBZ



**Graphite**  
NRB401rGR



Note: Pop-up Waste Not Included

**NRB3555BN**

Rectangle Stainless Steel Basin  
Brushed Nickel



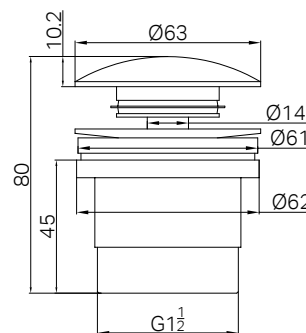
**Brushed Gold**  
NRB3555BG



**Brushed Bronze**  
NRB3555BZ



**Graphite**  
NRB3555GR



**NRA706BN**

Universal Pop Up Waste  
Brushed Nickel



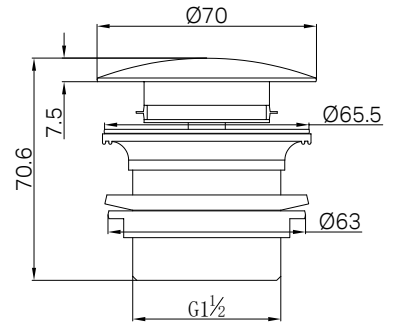
**Brushed Gold**  
NRA706BG



**Brushed Bronze**  
NRA706BZ

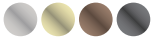


**Graphite**  
NRA706GR



**NRA707BN**

40mm Bath Pop-Up Plug With Removable Waste No Overflow  
Brushed Nickel



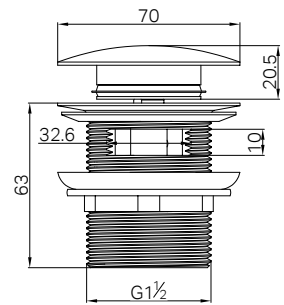
**Brushed Gold**  
NRA707BG



**Brushed Bronze**  
NRA707BZ

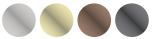


**Graphite**  
NRA707GR



**NRA710BN**

Pop Up Bath Waste 40mm With Overflow  
Brushed Nickel



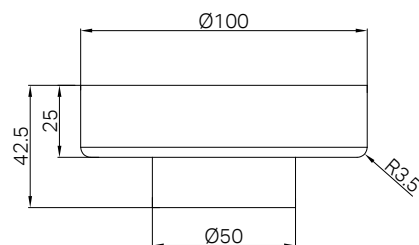
**Brushed Gold**  
NRA710BG



**Brushed Bronze**  
NRA710BZ



**Graphite**  
NRA710GR



**NRFW003BN**

100mm Round Tile Insert Floor Waste 50mm Outlet  
Brushed Nickel



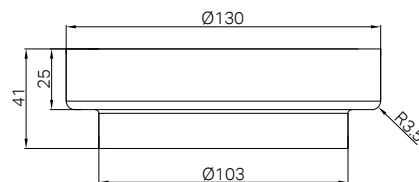
**Brushed Gold**  
NRFW003BG



**Brushed Bronze**  
NRFW003BZ



**Gun Metal**  
NRFW003GM



**NRFW005BN**

130mm Round Tile Insert Floor Waste 100mm Outlet  
Brushed Nickel



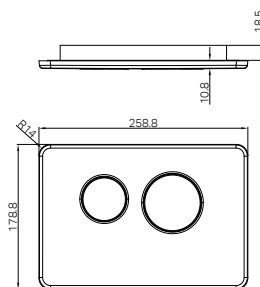
**Brushed Gold**  
NRFW005BG



**Brushed Bronze**  
NRFW005BZ



**Gun Metal**  
NRFW005GM



**NRPL001BN**

In Wall Toilet Push Plate  
Brushed Nickel



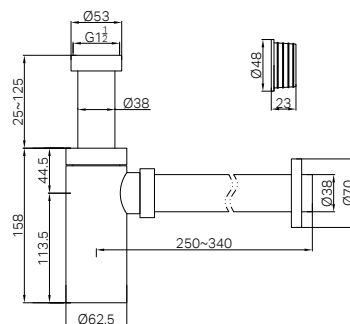
**Brushed Gold**  
NRPL001BG



**Brushed Bronze**  
NRPL001BZ



**Graphite**  
NRPL001GR



**NRA186WBN**

40mm Round Bottle Trap  
Brushed Nickel



**Brushed Gold**  
NRA186WBG



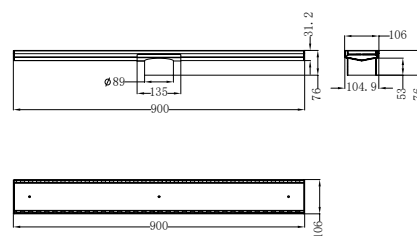
**Brushed Bronze**  
NRA186WBZ



**Graphite**  
NRA186WGR

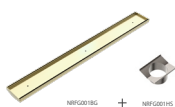


NRFG001BN + NRFG001HS

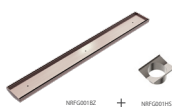


### NRFG001hsBN

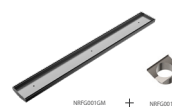
Tile Insert V Channel Floor Grate 89mm Outlet With Hole Saw  
Brushed Nickel



Brushed Gold  
NRFG001hsBG



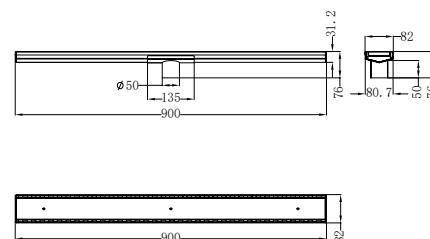
Brushed Bronze  
NRFG001hsBZ



Gun Metal  
NRFG001hsGM

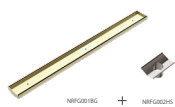


NRFG002BN + NRFG002HS



### NRFG002hsBN

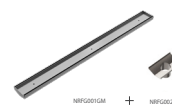
Tile Insert V Channel Floor Grate 50mm Outlet With Hole Saw  
Brushed Nickel



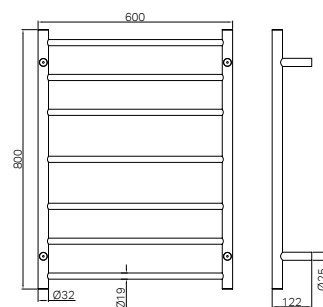
Brushed Gold  
NRFG002hsBG



Brushed Bronze  
NRFG002hsBZ



Gun Metal  
NRFG002hsGM



**NR190001BN**

Non-Heated Towel Ladder  
Brushed Nickel



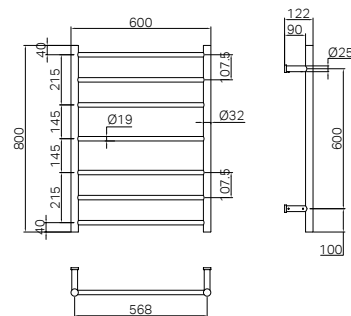
**Brushed Gold**  
NR190001BG



**Brushed Bronze**  
NR190001BZ



**Graphite**  
NR190001GR



**NR190003hBN**

Mecca 240V 7 Bar Heated Towel Ladder  
Brushed Nickel



**Brushed Gold**  
NR190003hBG



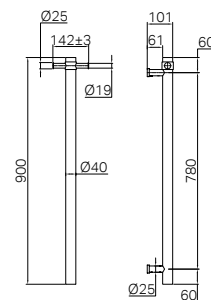
**Brushed Bronze**  
NR190003hBZ



**Graphite**  
NR190003hGR



Heated Towel Ladder



**NRV902hBN**

Mecca 240V Single Vertical Heated Towel Rail  
Brushed Nickel



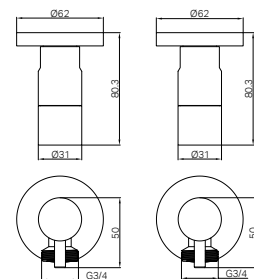
**Brushed Gold**  
NRV902hBG



**Brushed Bronze**  
NRV902hBZ



**Graphite**  
NRV902hGR



**NR262109dBN**

Washing Machine Tap Set  
Brushed Nickel



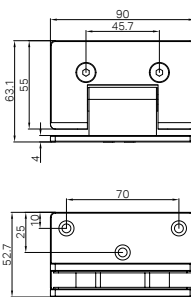
**Brushed Gold**  
NR262109dBG



**Brushed Bronze**  
NR262109dBZ



**Graphite**  
NR262109dGR



**NRSH101aBN**

90 Degree Glass to Wall Shower Hinge 10mm Glass  
Brushed Nickel



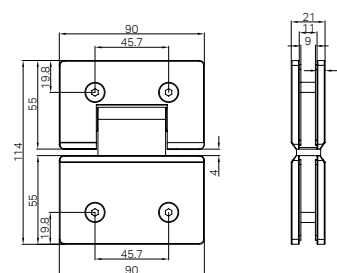
**Brushed Gold**  
NRSH101aBG



**Brushed Bronze**  
NRSH101aBZ



**Gun Metal**  
NRSH101aGM



**NRSH102aBN**

180 Degree Glass to Glass Shower Hinge 10mm Glass  
Brushed Nickel



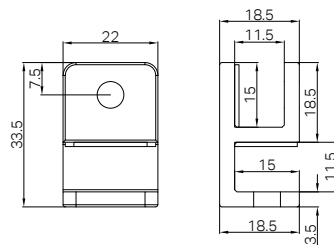
**Brushed Gold**  
NRSH102aBG



**Brushed Bronze**  
NRSH102aBZ



**Gun Metal**  
NRSH102aGM



**NRS201aBN**

Over-Panel Glass to Glass Fitting 10mm Glass  
Brushed Nickel



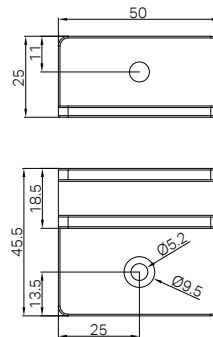
**Brushed Gold**  
NRS201aBG



**Brushed Bronze**  
NRS201aBZ



**Gun Metal**  
NRS201aGM



**NRS202aBN**

Shower F Bracket 10mm Glass  
Brushed Nickel



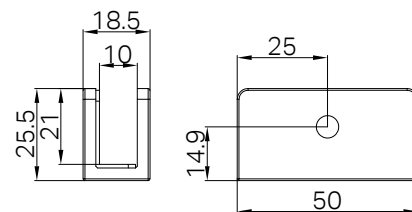
**Brushed Gold**  
NRS202aBG



**Brushed Bronze**  
NRS202aBZ



**Gun Metal**  
NRS202aGM



**NRS203aBN**

Shower U Bracket 10mm Glass  
Brushed Nickel



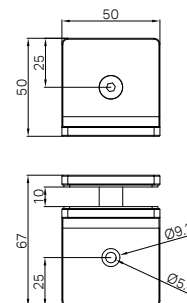
**Brushed Gold**  
NRS203aBG



**Brushed Bronze**  
NRS203aBZ



**Gun Metal**  
NRS203aGM



**NRS204aBN**

90 Degree Glass to Wall Bracket 10mm Glass  
Brushed Nickel



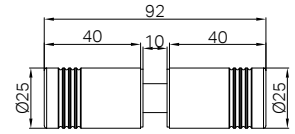
**Brushed Gold**  
NRS204aBG



**Brushed Bronze**  
NRS204aBZ

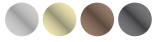


**Gun Metal**  
NRS204aGM



**NRSH301aBN**

Round Shower Knob  
Brushed Nickel



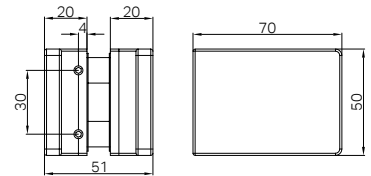
**Brushed Gold**  
NRSH301aBG



**Brushed Bronze**  
NRSH301aBZ

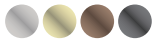


**Gun Metal**  
NRSH301aGM



**NRSH302aBN**

Square Shower Knob Handle  
Brushed Nickel



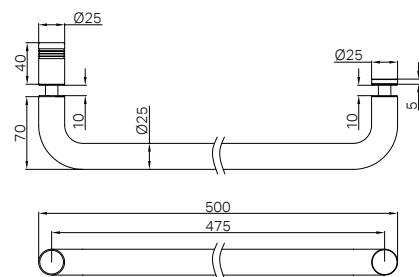
**Brushed Gold**  
NRSH302aBG



**Brushed Bronze**  
NRSH302aBZ



**Gun Metal**  
NRSH302aGM



**NRSH303aBN**

Towel Bar 500mm  
Brushed Nickel



**Brushed Gold**  
NRSH303aBG



**Brushed Bronze**  
NRSH303aBZ



**Gun Metal**  
NRSH303aGM

# WARRANTY POLICY

## 1. Warranty Coverage Statement

Nero Tapware is committed to providing high-quality products designed to meet the highest industry standards. Our warranty reflects our confidence in the durability and reliability of our products.

## 2. Applicability

This warranty applies to goods purchased on or after 1st May 2024, covering both Australia and New Zealand markets, in compliance with the Australian Consumer Law (ACL) and New Zealand's Consumer Guarantees Act (CGA).

## 3. Warranty Periods

Premium Range (Residential Use)		
Category	Warranty Period(Years)	Warranty Details
Zen, Opal, Kara, York, Bianca, Serenity, Pure, Mecca & Mecca Care Tapware	25 / 25 / 2	-25 years replacement cartridge only -25 years replacement products or parts on all finishes -2 years replacement products or parts & labour
Zen, Opal, York, Bianca, Serenity, Mecca & Mecca Care Showers	25 / 2	-25 years replacement products or parts on all finishes -25 years on hand showers, shower heads, Shower hoses replacement only (labour not included) -2 years replacement products or parts & labour
Zen, Opal, York, Bianca, Mecca & Mecca Care Bathroom Accessories	25	-25 years replacement products or parts on all finishes
Opal Metal Basins	25	-25 years replacement products on all finishes
Heated Towel Rails	25 / 1	-25 years replacement products or parts on all finishes -1 year on power transformer replacement
Electronic Mixers / Taps & Push Taps	25 / 2	-25 years replacement products or parts on all finishes -2 years Replacement products or parts & labour

Premium Range (Commercial Use)		
Category	Warranty Period(Years)	Warranty Details
Zen, Opal, Kara, York, Bianca, Serenity, Pure, Mecca & Mecca Care Tapware	15 / 10 / 1	-15 years replacement cartridge only -10 years replacement products or parts on all finishes -1 year replacement products or parts & labour
Zen, Opal, York, Bianca, Serenity, Mecca & Mecca Care Showers	10 / 1	-10 years replacement products or parts on all finishes -10years on hand showers, shower heads, Shower hoses replacement only (labour not included) -1 year replacement products or parts & labour
Zen, Opal, York, Bianca, Mecca & Mecca Care Bathroom Accessories	10	-10 years replacement products or parts on all finishes
Opal Metal Basins	10	-10 years replacement products on all finishes
Heated Towel Rails	10 / 1	-10 years replacement products or parts on all finishes -1 year on power transformer
Electronic Mixers / Taps & Push Taps	2 / 1	-2 years replacement products or parts on all finishes -1 year Replacement products or parts & labour

## Standard Range (Residential and Commercial)

Category	Warranty Period(Years)	Warranty Details
Mixer Taps	15 / 10 / 1	-15 years replacement Cartridge only -10 years replacement products or parts on all finishes -10 years on washing machine stops replacement only -1 year replacement products or parts & labour
Electronic Mixers / Taps & Push Taps	2 / 1	-2 years replacement products or parts on all finishes -1 year replacement products or parts & labour
Showers	10 / 1	-10 years replacement products or parts on chrome finishes -10 years replacement products or parts on other finishes -10 years on hand showers, shower heads, Shower hoses replacement only (labour not included) -1 year replacement products or parts & labour
Bath Outlets	10	-10 years replacement products or parts only on all finishes
Bathroom Accessories	10	-10 years replacement products or parts only on all finishes
Other Accessories	10	-10 years on universal pop-up waste replacement only -10 years on bottle trap replacement only -10 years on glass hardware replacement only -10 years product replacement and 1 year labour on toilet push plate only -10 years product replacement and 1 year labour on cistern only -10 years on floor waste replacement only

4. The warranty period commences from date of purchase, or for new buildings from date of handover.

### 5. How to make a warranty claim?

To make a warranty claim, customers must contact the Seller from which the goods were purchased or contact Nero Tapware directly. \*Proof of purchase or equivalent documentation is required. (e.g. Handover documentation for new homes, Tax Invoice, Water Marks, etc.) For Australia Consumers and New Zealand Consumers,

*Australia*

☎ 03 8786 3170

✉ support@nerotapware.com.au

*New Zealand*

☎ 09 870 5549

✉ support@nerotapware.co.nz

6. The expense of claim on the warranty will be borne by the customer

7. This warranty covers the repair or, at Supplier's option, replacement of any goods which are defective through faulty manufacture or materials, free of charge and labour. The Supplier reserves the right to alter, or amend this warranty offer in writing at any time. The Supplier reserves the right to provide Minor components (e.g. Handles, aerators, buttons, dress rings, spindle/cartridges and seals) as 'Parts Only' to the customer as part of replacement warranty.

This warranty does not cover any claims for labour, or additional products/parts associated with allegedly faulty goods for work supplied by an outside party that is not approved in advance in writing by the Supplier.

8. For installed goods, the Supplier requires adequate access to evaluate the goods, fittings, and fixtures for any warranty claim, as well as to perform any necessary warranty repairs. The Supplier will not be liable for any consequential damage or costs if adequate access to the goods, fittings, or fixtures is not provided.

9. For discontinued or unavailable goods, the Supplier may replace the goods with equivalent current or available goods, using best endeavours and product knowledge to match the appearance and specifications of the original goods.

10. Supplier's obligations under warranty are limited to the repair or, at Supplier's option, replacement of any product which are defective through faulty workmanship or materials. To the extent permitted by law, Supplier will not be liable for any loss to furniture, floor coverings, walls, fixtures or any consequential loss of any kind caused by any defect in the product components.

11. This warranty does not cover defects caused by or arising from any of the following:

11.1. Goods installed by a person other than a licensed plumber. This does not apply to bathroom accessories such as towel rails, shelves, etc.

11.2. Goods not installed to relevant national standards or state REGULATIONS.

11.3. Tapware exposed to water pressures and/or temperatures that exceed stated limitations as per the standard installation instructions. Note: AS/NZS 3500.1:2003 specifies 500kPa maximum water supply pressure at any outlet within a building for new

installations.

11.4. Fitting of other devices to the outlet of tapware (e.g. water filters).

11.5. Fitting of in tap body or end of line water flow REGULATING devices that have not been approved by Supplier.

11.6. Products used for incorrect applications, non-potable water, etc.

11.7. Damage as a result of obstruction due to inadequate flushing of system before use.

11.8. Service, repairs or other non-standard replacement parts previously undertaken without Supplier's prior written approval.

11.9. Damage to finishes by adhesives, sealant, etc.

11.10. Damage to finishes which arise from installation or post-installation use.

11.11. Failure to observe manufacturer's care and cleaning instructions.

11.12. Improper or abusive use of product and/or damage resulting from misuse, accident or neglect.

11.13. Fair wear and tear, such as the working seals in the inlet and outlet valves, including scratching from cleaning etc.

Note: It is the installer/consumers responsibility to ensure:

- Product is not damaged prior to installation.
- They are happy with their purchase.
- The product has all of its components.
- Required maintenance is performed.

**12.** Should any warranty claim be made, and service attended to by the Supplier or its authorized service agent, and the fault is due to a cause expressly excluded from this warranty above; the Supplier reserves the right to charge service fee for any work carried out.

**13.** This warranty is in addition to the rights conferred upon customers by the Australian Consumer Law (ACL) and the Consumer Guarantees Act 1993 (CGA) in New Zealand.

**14.** Our goods and services come with guarantees that cannot be excluded under the Australian Consumer Law (ACL) and the Consumer Guarantees Act 1993 (CGA) in New Zealand. For major failures with the service, you are entitled to the following remedies:

#### **15. Refund Policy:**

Our goods and services come with guarantees that cannot be excluded under the Australian Consumer Law (ACL) and the Consumer Guarantees Act 1993 (CGA) in New Zealand. For major failures with the goods, you are entitled to a refund. If a failure with the goods does not amount to a major failure, you are entitled to have the failure rectified in a reasonable time. If this is not done, you are entitled to a refund for the goods. While our company acknowledges its responsibility for addressing any issues with the quality of our products, we recommend that customers contact the place of purchase for inquiries related to returns and refunds. We are committed to assist and cooperating with our distributors or retailers to resolve any issues customers may encounter with our products.

## **TAPWARE & ACCESSORIES CARE AND CLEANING INSTRUCTIONS**

Under no circumstances should you install tapware using acetone silicones.

1. Never use harsh detergents or abrasive cleaners, as these will scratch the surface. This includes organic harsh chemicals such as citrus.
2. Use of wax-based furniture cream should be avoided as this can result in a build-up of deposits, which could detract from the appearance.
3. All products should always be cleaned with care using a soft dry micro fibric cloth or a soft cloth with warm soapy water for a lifetime of use.
4. Individual products may be subject to additional or specific care and cleaning instructions. Please refer to documentation accompanying those products.
5. The surface of the marble handle is covered under warranty for 3 years. Upon expiration of the warranty, customers should procure a suitable marble impregnating sealer and apply it evenly to the surface of the marble handle to maintain its appearance and durability.

## **TERMS AND CONDITIONS**

### **1. DEFINITIONS**

ACL refers to the Australian Consumer Law as outlined in the Competition and Consumer Act 2010 (Cth) and its associated REGULATIONS, as amended from time to time, applicable within Australia. CGA refers to the Consumer Guarantees Act 1993 and its associated REGULATIONS, as amended from time to time, applicable within New Zealand.

Consumer is defined according to both the ACL and CGA, and in determining if the Customer is a consumer, the determination is made based on the Customer's status under the Agreement according to the applicable law.

Customer means the person, jointly and severally if more than one, acquiring goods or services from the Supplier.

Goods means goods supplied by the Supplier to the Customer.

GST refers to the Goods and Services Tax as defined in A New Tax System (Goods and Services Tax) Act 1999 (Cth) for Australia and the Goods and Services Tax Act 1985 for New Zealand, and their associated REGULATIONS as amended.

Order means every order placed by the Customer for the purchase of goods or services from the Supplier.

PPSA refers to the Personal Property Securities Act 2009 (Cth) for Aus-

tralia and the Personal Property Securities Act 1999 for New Zealand, and their associated REGULATIONS as amended.

Services means services supplied by the Supplier to the Customer.

Supplier refers to Nero Bathrooms International Pty Ltd trading as Nero Tapware ABN 57 148 833 989 or its REGISTERED equivalent in New Zealand.

Terms refers to these Terms and Conditions of Trade, as applicable in Australia and New Zealand, incorporating any necessary modifications or supplements to comply with the laws and commercial practices of each country.

### **2. GOODS**

The Supplier may modify, add, or remove goods in its product range without notice. This includes changes to the country of origin, materials, dimensions, and colors.

### **3. QUOTATION**

Quotations provided by the Supplier are valid for 30 days, represent an invitation to treat, and are only valid if in writing. They may include additional terms that supersede these Terms in case of inconsistencies.

#### 4. ORDERS

Orders placed by the Customer constitute an offer, which the Supplier may accept at its discretion. Acceptance results in a legally binding contract based on these Terms and any additional terms in the quotation.

#### 5. PRICING

Prices are exclusive of GST and other applicable taxes or duties unless stated otherwise. A handling and delivery charge may apply to orders below a certain value.

#### 6. PAYMENT

Payment terms include full payment within 30 days from the invoice date unless otherwise agreed. The Supplier may require payment upon delivery or a non-refundable deposit for custom orders.

#### 7. PAYMENT DEFAULT

Default in payment allows the Supplier to suspend credit, charge interest, recover costs related to enforcement or goods recovery, and cease or suspend further supply.

#### 8. PERSONAL PROPERTY SECURITIES ACT

Terms related to the PPSA establish a security interest in the goods supplied and require customer actions to ensure a valid, REGistrable security interest.

#### 9. RISK AND INSURANCE

Risk and insurance responsibility transfer to the Customer upon delivery or collection of goods. The Customer is responsible for obtaining necessary licenses or permits.

#### 10. PERFORMANCE OF AGREEMENT

Delivery dates are estimates only. The Supplier endeavours to meet these estimates but is not liable for any delivery delays.

#### 11. DELIVERY

The Supplier arranges delivery, with costs borne by the Customer.

Part deliveries are permissible, and the Customer is responsible for inspecting goods upon delivery.

#### 12. RETURNS

Returns due to change of Mind are at the Supplier's discretion. Custom-made or altered goods are non-returnable. A restocking fee may apply.

#### 13. LIABILITY

The Terms exclude implied terms or warranties beyond those explicitly stated or provided by law, particularly under the ACL and CGA, where applicable.

#### 14. CANCELLATION

The Supplier may cancel orders if unable to deliver or provide services. Customer cancellation or suspension of orders is not binding once accepted.

#### 15. SHORTAGES AND EXCHANGES

Claims for shortages, damages, or non-compliance must be made within 14 days. The Supplier's liability is limited to replacement, refund, or repair of the goods.

#### 16. FORCE MAJEURE

The Supplier is not liable for failure to perform due to events beyond its control, including industrial disputes, accidents, and import or export restrictions.

#### 17. MISCELLANEOUS

The laws of Victoria, Australia, and New Zealand govern these Terms, with non-exclusive jurisdiction of their courts. A waiver of any Term does not imply a waiver of other rights.

This comprehensive modification and supplement ensure the Terms and Conditions are applicable and enforceable in both Australia and New Zealand, accommodating the legal and commercial practices of both countries.

# Nero

*This warranty policy is issued by Nero Tapware, with its Head Office located at 11-13 Buontempo Road, Carrum Downs, Victoria, Australia.*

*For inquiries, Nero's contact details are as follows*

#### **Australia:**

Nero Bathrooms International Pty Ltd (ABN 57 148 833 989)  
11-13 Buontempo Road, Carrum Downs VIC 3201  
Phone: 03 8786 3170  
Email: support@nerotapware.com.au

#### **New Zealand:**

Nero Tapware Limited  
Westfield Newmarket  
9 Morrow Street, Newmarket Auckland 1023  
Phone: 09 870 5549  
Email: support@nerotapware.co.nz

# Nero

**Please note:**

Nero Tapware reserves the right to modify specifications shown, or delete products from their range without prior notification.